

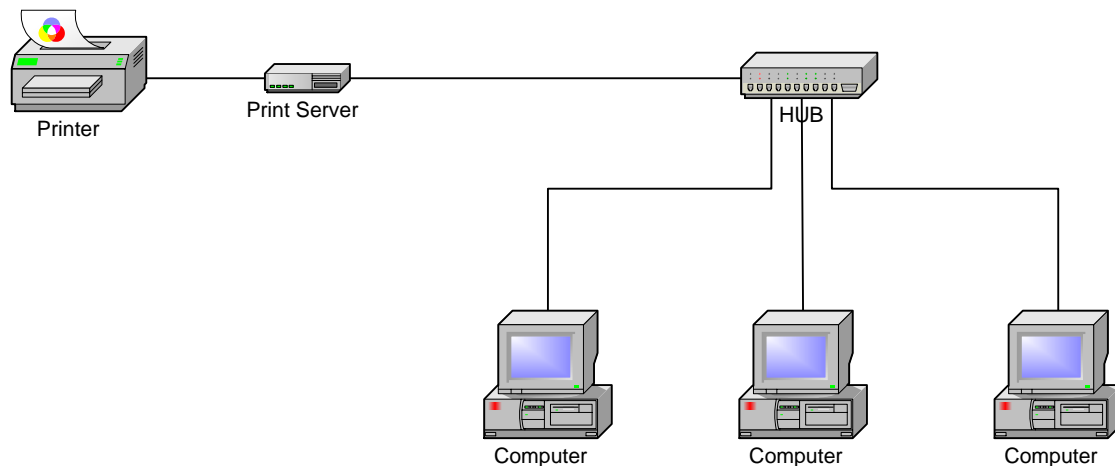
# **Quick Installation Guide**

**V1.0**

## Before you start, you should prepare the following items:

- One Windows-based PC with print server setup CD
- One printer
- One printer cable
- One HUB

## Wired Network with Print Server:



## Hardware Installation:

1. Turn off the printer's power.
2. Connect the print server to your printer with the supplied printer cable.
3. Turn the printer's power on.
4. Plug the AC power adapter into the power connector on the print server.
5. Wait 10 seconds as part of the print server's Power On Self Test (POST).

## Software Installation:

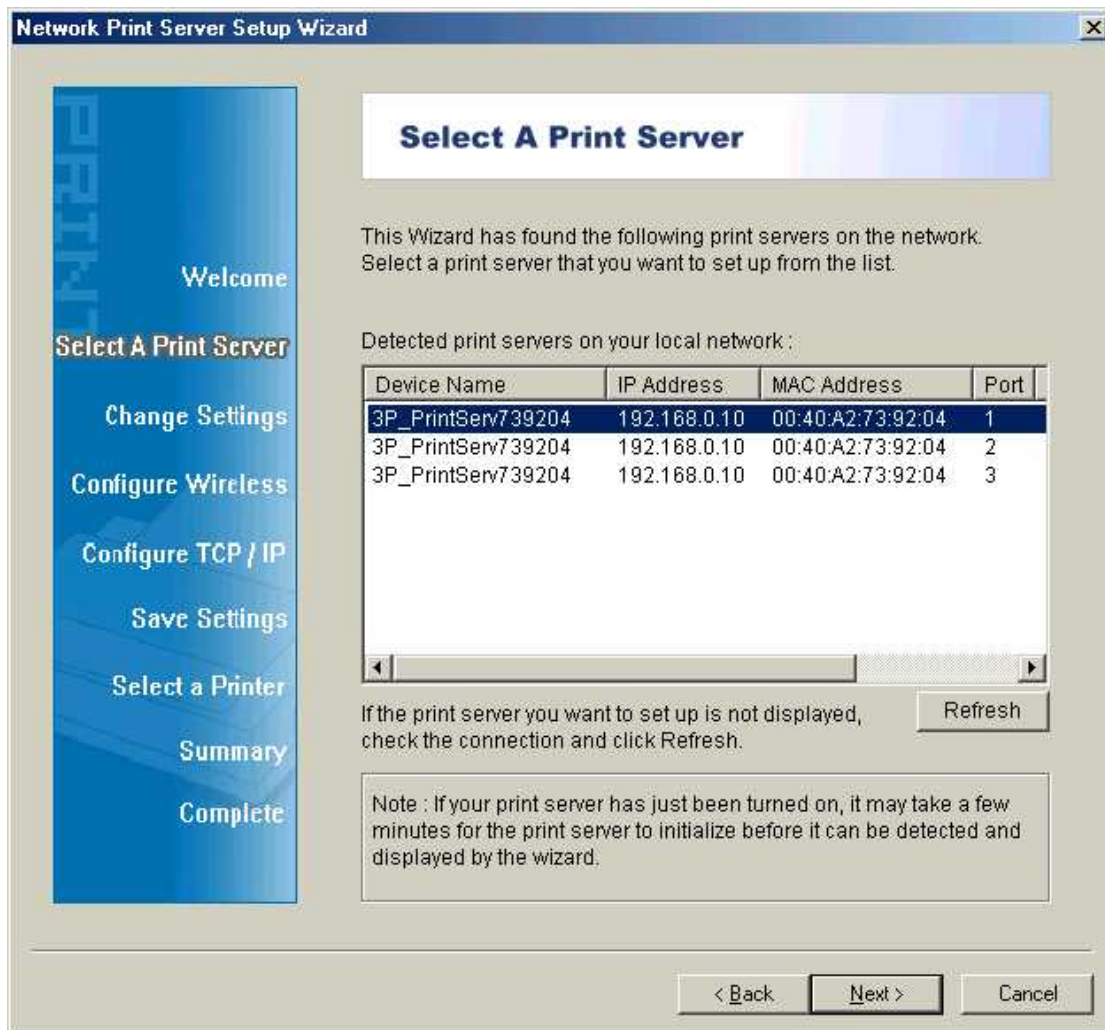
1. To enable network communication with print server, your computer must have a proper IP address, e.g. 192.168.0.100
2. Insert the setup CD into your CD-drive, and the following message appears.



3. Choose **Setup Wizard** to install the print server and configure the connected printer.



4. Click **Next**, the wizard will automatically discover the print server.
5. From the **Select A Print Server** screen, select the print server and its port number that you want to configure and click **Next**.



6. On the **Change Settings** screen, select **No** or **Yes**:

The screenshot shows the 'Change Settings' window of the Network Print Server Setup Wizard. On the left is a blue sidebar with a vertical list of steps: Welcome, Select A Print Server, Change Settings (highlighted), Configure Wireless, Configure TCP / IP, Save Settings, Select a Printer, Summary, and Complete. The main area has a title bar 'Change Settings' and a paragraph explaining the wizard's purpose. Below this are two radio buttons: 'Yes, I want to change settings.' (selected) and 'No, I don't want to change settings.'. A 'Password:' label is followed by an empty text box. At the bottom right are three buttons: '< Back', 'Next >', and 'Cancel'. A small text box at the bottom explains that a password is required for new servers or those in diagnostic mode.

**Network Print Server Setup Wizard**

**Change Settings**

This Wizard allows the network administrator to change some basic settings of the print server. If you are not the network administrator, do not change settings. Wrong settings may cause the print server not to function properly.

☒ Yes, I want to change settings.

Password :

☐ No, I don't want to change settings.

To change settings, you must enter the password. A brand-new Network print server has no default password. If you are configuring a wireless print server and it's now operating in Diagnostic mode, you don't need to enter the password.

< Back   Next >   Cancel

Click **No** if you want the print server to keep using the default IP address and keep the default settings, and then click **Next**.

- IP address: 192.168.0.10
- Subnet Mask: 255.255.255.0

Click **Yes** if you want change IP address to the print server, and then click **Next**.

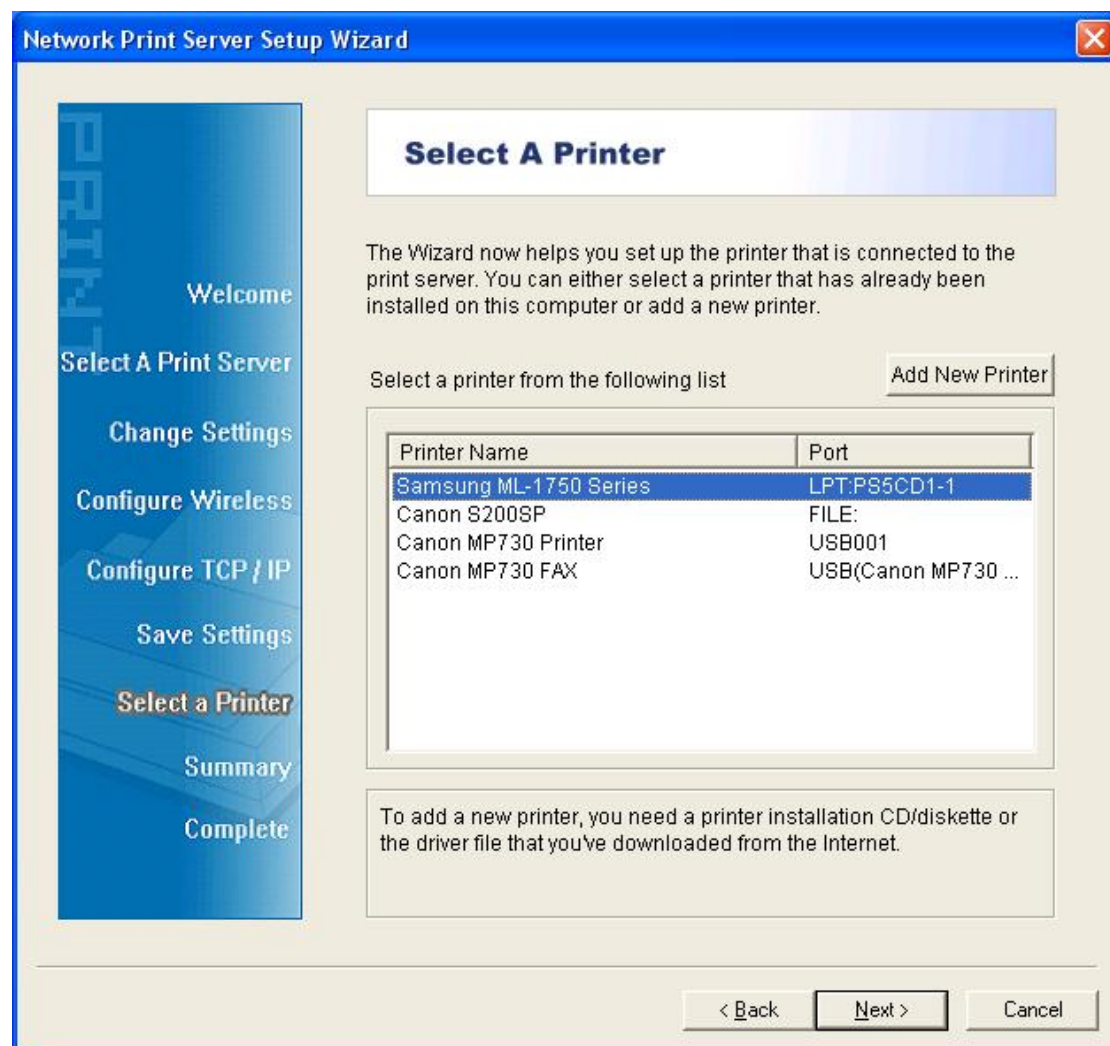
**Note:**

The IP address of print server must be within the same subnet as your network adapter.

7. On the **Select A Printer** screen, select an already configured printer from the list, click **Next** and then **Finish** to complete the installation.

or

Select **Add New Printer** if the print server is connected to a printer that hasn't been installed before and does not appear in the list.

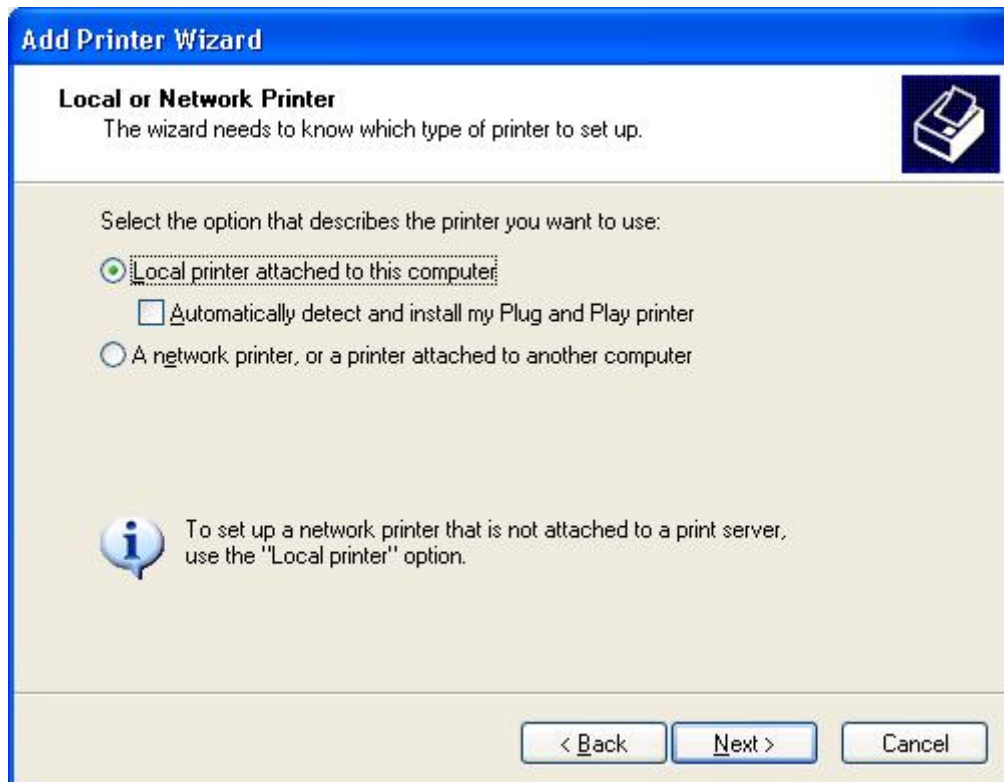


8. Click **Add New Printer** to launch **Windows Add Printer Wizard**.

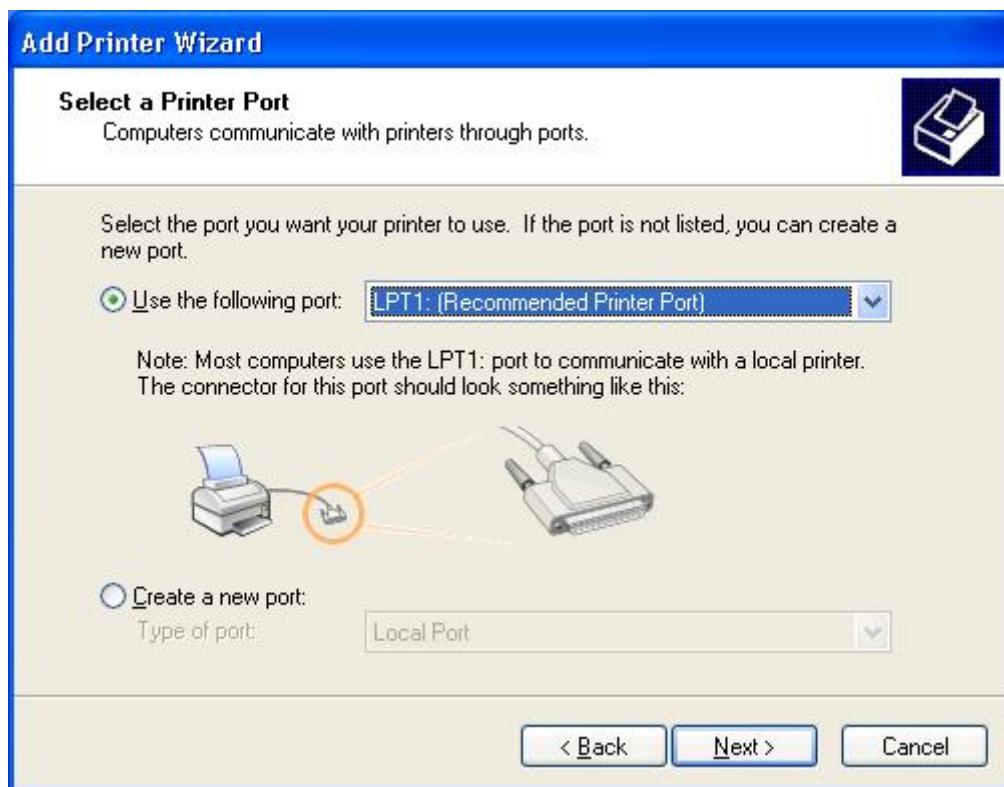




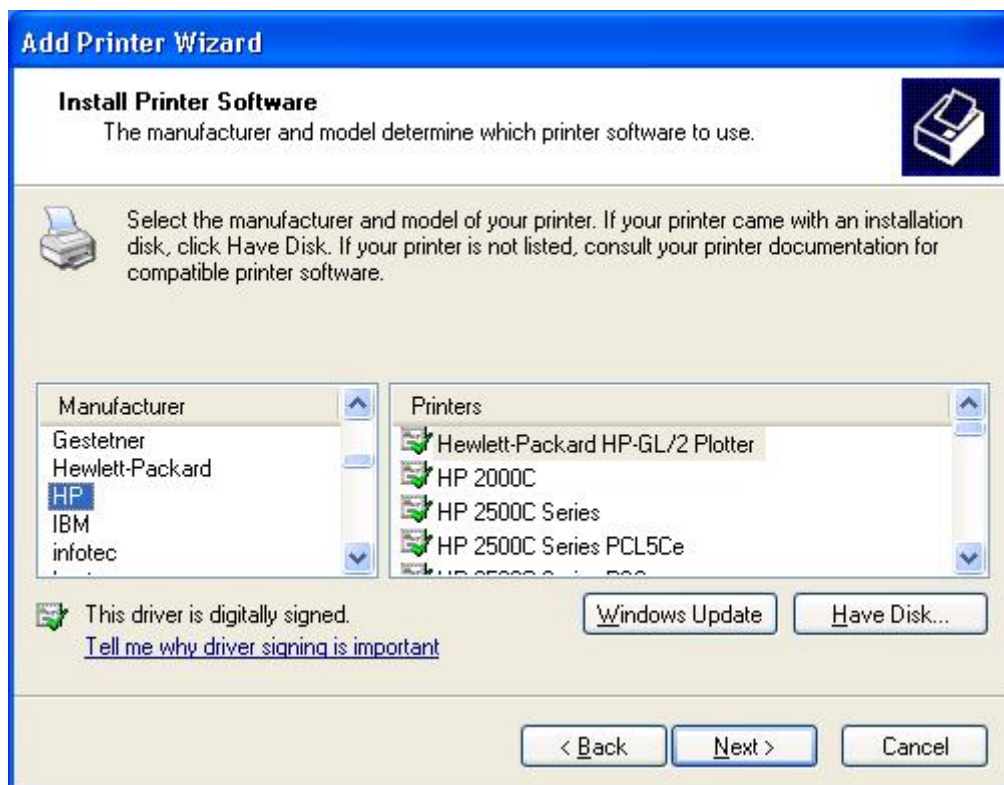
9. Click **Next** and select **Local Printer**, make sure the **Automatically detect and install my Plug and Play printer** check box is **NOT** checked. Then click **Next**.



10. Make sure the **Use the following port** radio-button is clicked and select **LPT1: (Recommended Printer Port)** from the pull-down list. Then click **Next**.



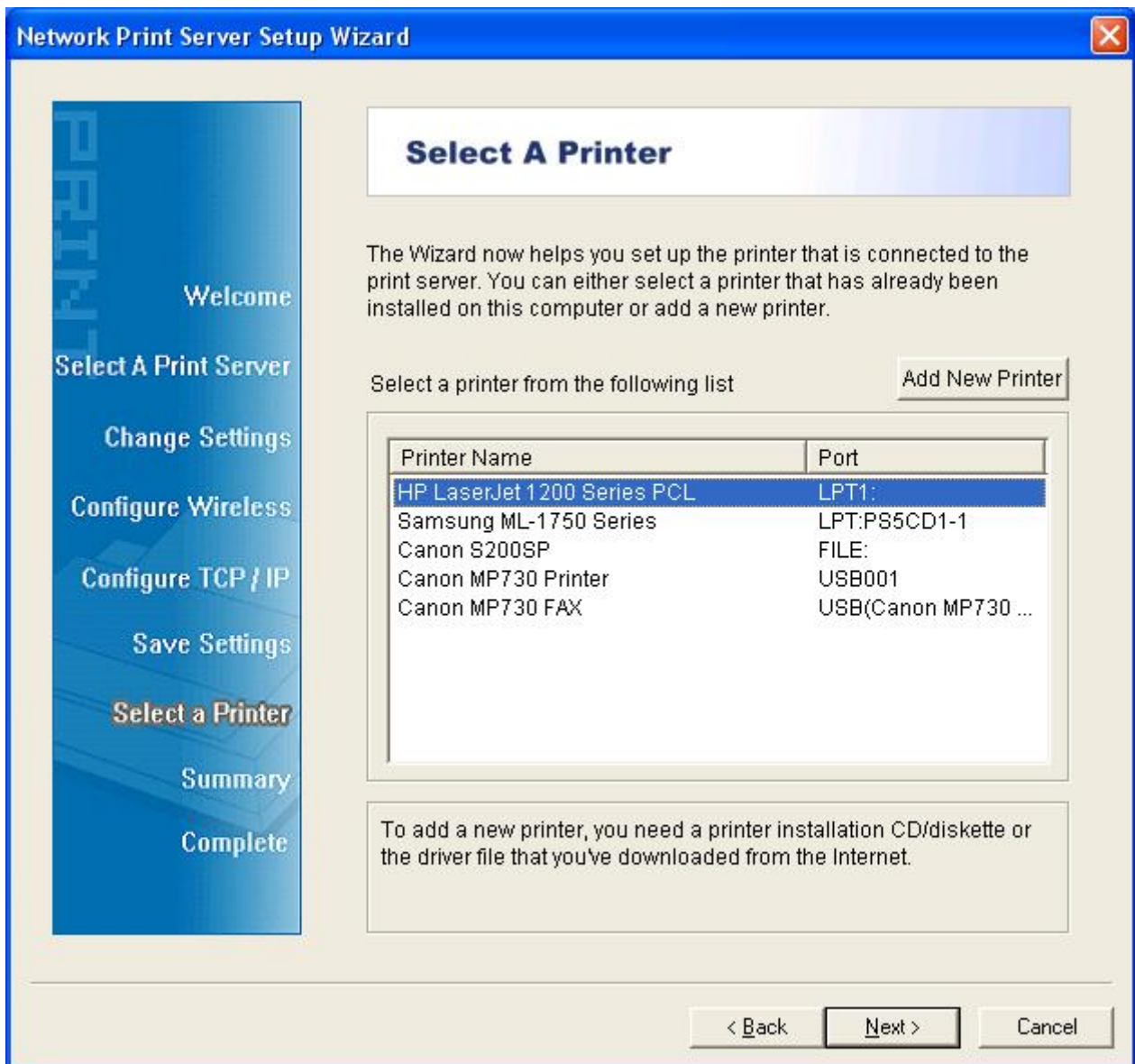
11. Select **Manufacturer** and **Printer** from the lists of printer's driver. Then click **Next**.



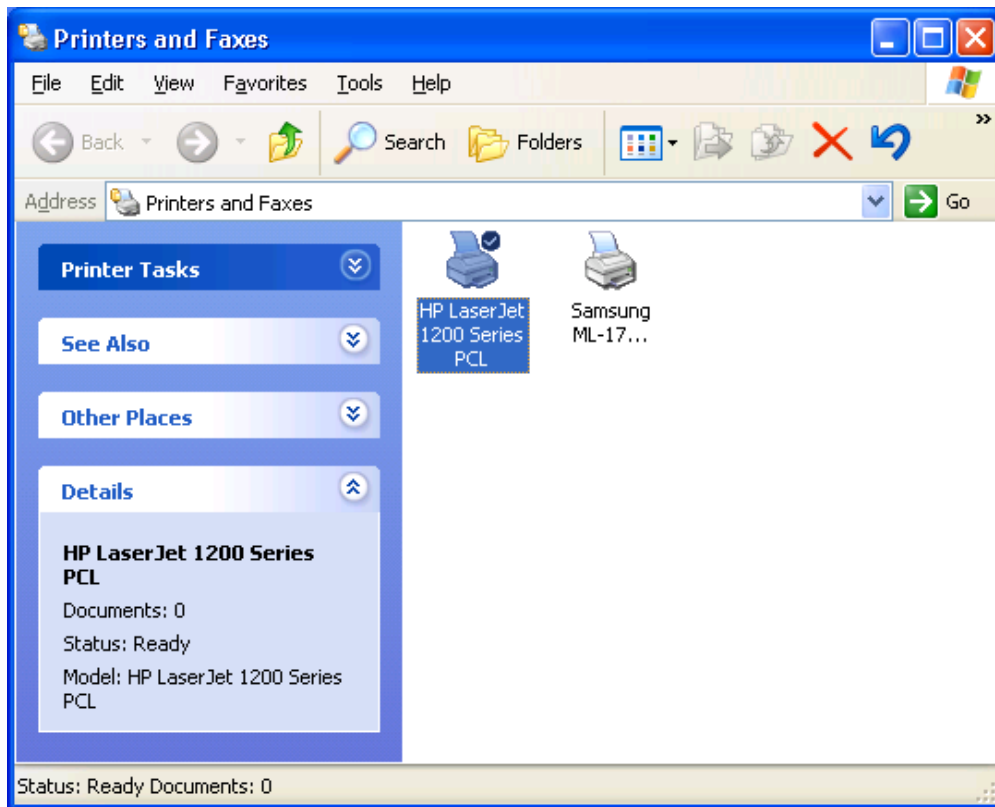
12. If you already have the printer's driver installed, you will be asked whether to keep it or to replace it. Click **Next**. Supply a name for the printer and choose whether you want to make it your default printer. Then click **Next**.



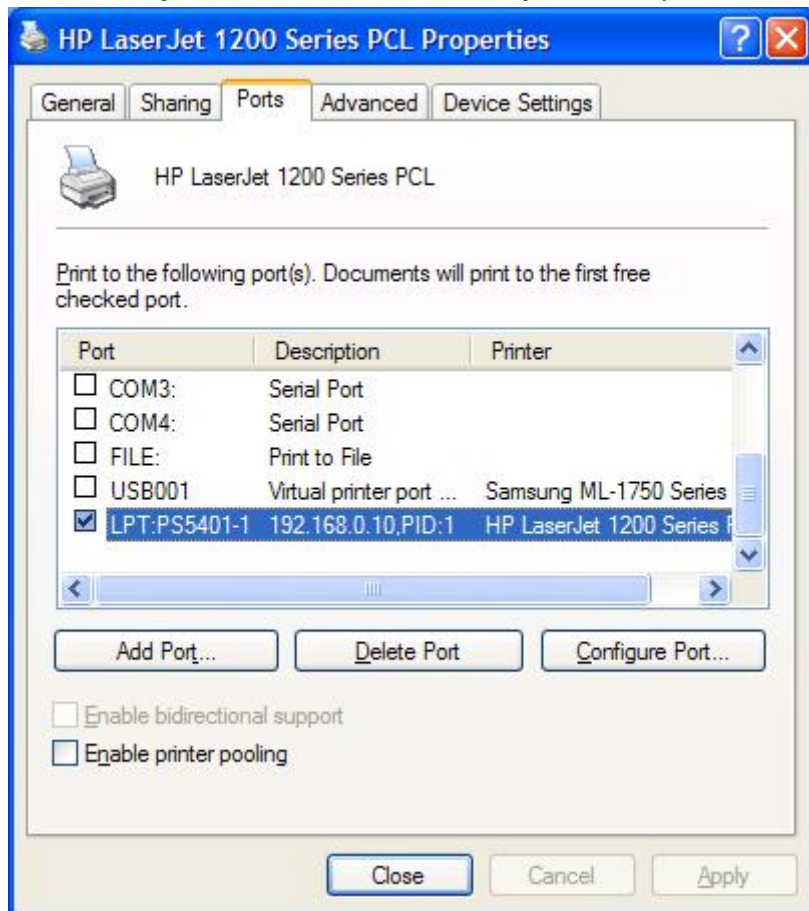
13. Then, choose whether you want to share the printer with other network users, print a test page (please select **No.**), etc. Select the appropriate radio-button and click **Next** and **Finish**.
14. In the setup wizard, finish the installation by highlighting the installed printer in the **Select a Printer** list and click **Next** -> **Finish**.



15. From Windows system, go to **start** -> **Printers and Faxes** and highlight your newly installed printer.



16. Right-click, select **Properties** -> **Ports** and verify that the print server's port appears.



17. Go to **General**; click **Print Test Page** to verify the configuration.

18. Done.

**Note:**

If you wish to install more print servers, start setup wizard from your Windows Start menu:  
**start -> All Programs -> Network Print Server -> PSWzard** and repeat the installation procedure.

All contents are subject to change without prior notice.

