

USER MANUAL for USB2.0 Data-Link/ Bridge-Network

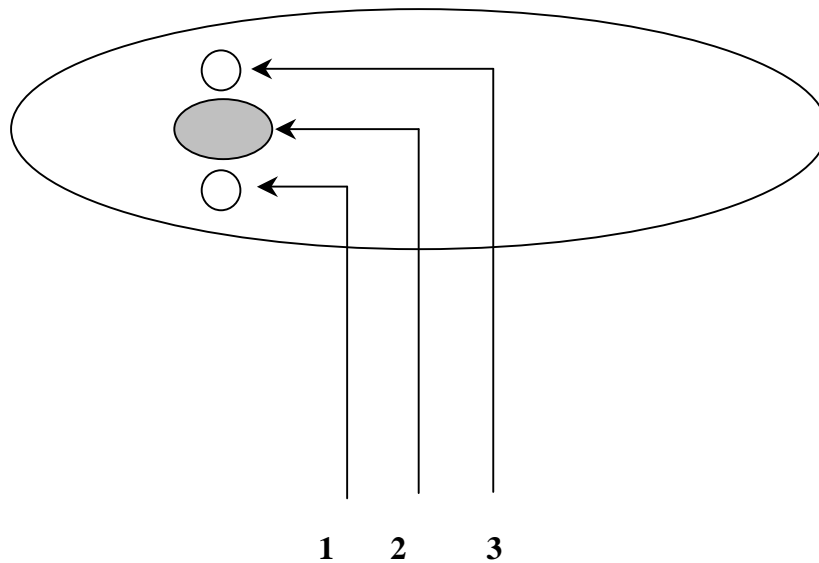
1. Attention	– page 02
2. Indicate light and switching button	
2.1. Hardware Change Device Mode	– page 03
3. USB2.0 Data-Link	
3.1. Running the Setup Program	– page 04
3.2. Running the PCLinq2 Data-Link Program	– page 09
3.3. Uninstalling the PCLinq2 Bridge Cable	– page 12
4. Bridge-Network	
4.1. Running the Setup	– page 14
4.2. Running the Bridge-Network Application setting	– page 19
4.3. Uninstalling the PCLinq2 Bridge Cable	– page 12
5. Software Change Device Mode	
5.1. USB 2.0 Date-Link & Bridge-Network Change Mode	– page 41
6. Q&A	– page 43
7. Appendix	
7.1. Burn-in EEPROM	– page 45

Attention :

Please do not Click “file Change Device Mode” otherwise hardware change function will be lost . Please refer to page 45~47 retrieve EEPROM.

USER MANUAL for USB2.0 Data-Link/ Bridge-Network

Indicate light and switching button



1. **Power Light** : Show Green Light . When you Link Cable ,as Power ON/OFF
2. **Switching Button Mode** : Press Down is USB2.0 Data-Link function mode
UP is Bridge-Network function mode
3. **Action Light** : Flash Yellow light .When It's working as data linking or bridge networking .

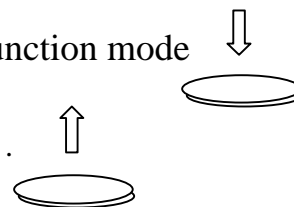
● Hardware Change Device Mode

1. From your computer plug out the PCLinq2 Hi-Speed USB Bridge-Data/Network Cable.
(it's the status of the disconnect.)



2. Hardware button Press Down is USB2.0 Data-Link function mode

UP is Bridge-Network function mode .



3. Now locate the USB port of your computer and plug in the PCLinq2 Hi-Speed USB Bridge-Data/Network Cable.



USER MANUAL for USB2.0 Data-Link/ Bridge-Network

USB2.0 Data Link

Introduction

Congratulations on your purchase of PCLinq2 Hi-Speed USB Bridge Cable! PCLinq2 is your Hi-Speed USB 2.0 solution to peer-to-peer network file sharing via the USB port. The PCLinq2 cable provides true plug-n-play capability while transferring files at greater speed than traditional USB or other legacy port file transfer products. Hi-Speed USB 2.0 solutions offer up to 40 times the speed compared to normal full-speed USB 1.1 products.

PCLinq2 also provides a File Transfer program that is similar to Windows Program Manager so you can easily drag-and-drop files or create folders in your local computer or in the linked remote PC. Just plug in the cable, run the PCLinq2 program and instantly transfer or copy files at high speed.

The PCLinq2 Hi-Speed USB Bridge Cable is highly suitable for mobile computer use and SOHO environment.

Features & Specifications

- Easy File Sharing and Data Transfer between 2 or 3 PCs via USB port
- Suitable for Mobile PC and SOHO environment
- Single chip ASIC Hi-Speed USB host to host communication
- Dual data buffer supports two-way data transfer
- Hi-Speed Performance with data transfer rate of over 15Mbytes/sec
- Full Compliance with the Universal Serial Bus Specification v1.1 and v2.0
- Bus Powered from either USB port– no separate power required
- Advanced Power Management Mechanism includes Suspend-Resume and Remote Wake-up Functions

System Requirements

- Windows 98SE, ME, 2000, XP or above
- Intel Pentium 133MHz or better based computer
- One standard USB 1.1 or USB 2.0 (recommended) port
- PCLinq2 Hi-Speed USB Bridge-Network Cable
- PCLinq2 Hi-Speed USB Bridge-Network Cable Setup Program

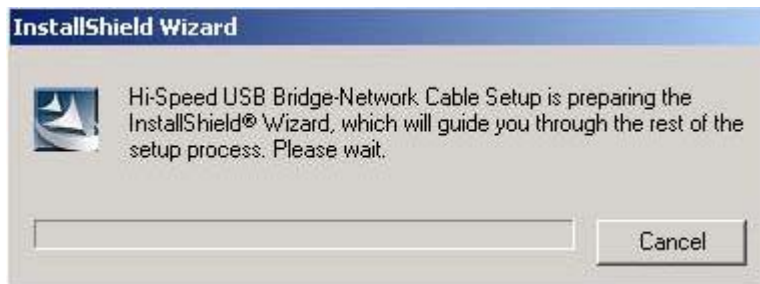
USER MANUAL for USB2.0 Data-Link/ Bridge-Network

Running the Setup Program

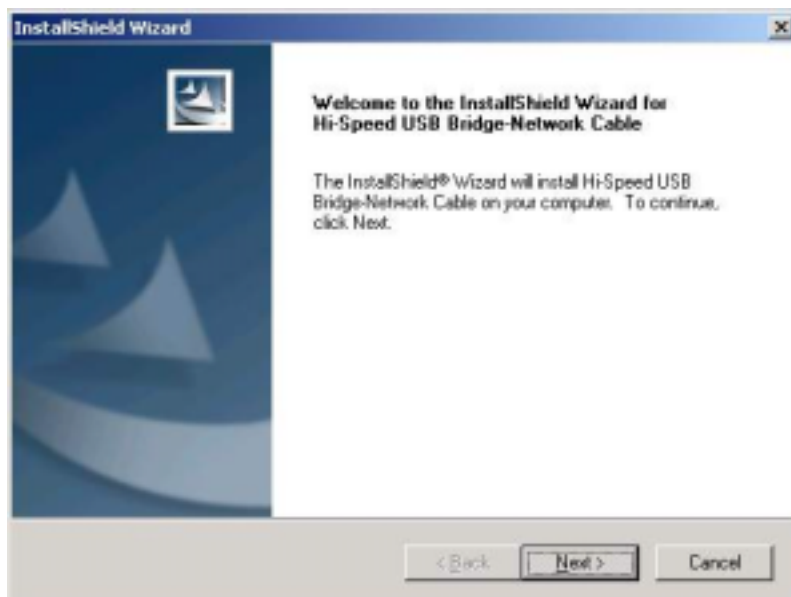
Before you plug-in and use the PCLinq2 Hi-Speed USB Cable for the first time in your computer, you first have to run the SETUP InstallShield program to preload the drivers and programs into your computer. This step is necessary in order for you to use the USB Bridge Cable properly under Windows operating system.

The following steps will show how to install the PCLinq2 Hi-Speed USB Bridge Cable under Windows XP. If you are using other Windows OS versions, the installation is also the same but the look of the dialogue boxes may be a bit different. This Setup program only supports Windows 98SE, ME, 2000, and XP.

1. Power on your computer and boot to Windows. Load Driver CD and run the **SETUP.EXE** executable program file. The Setup program will then start to prepare the InstallShield Wizard that will guide you through the rest of the setup process.

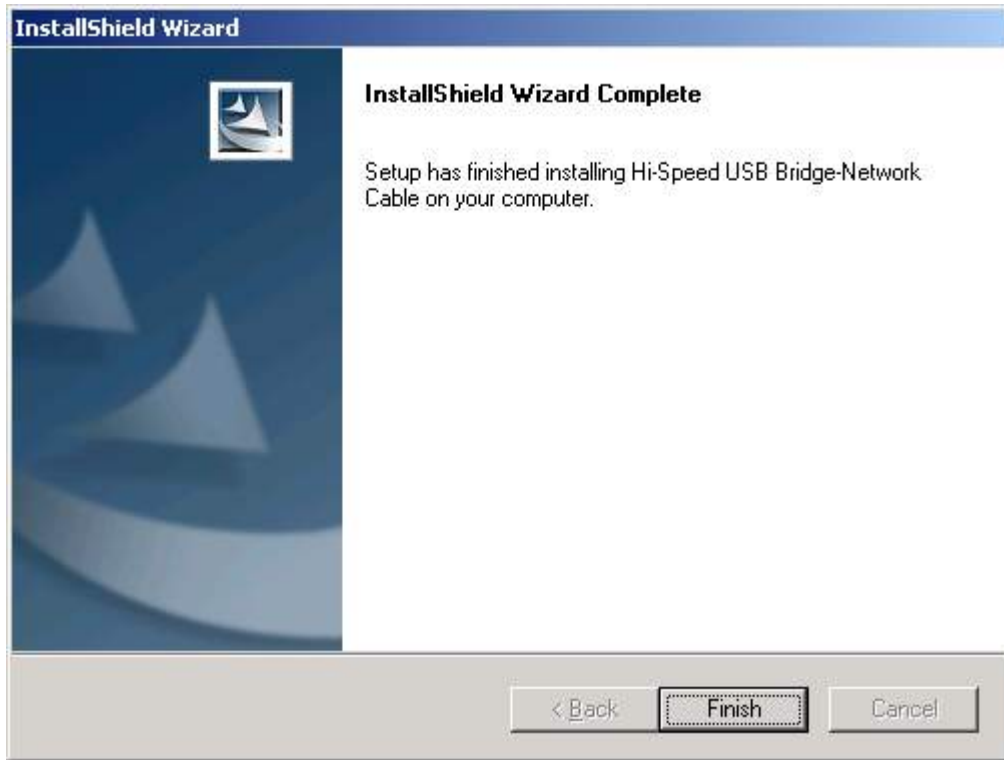


2. The InstallShield Wizard welcome dialog box will then appear to display some information regarding the Setup program. Follow the instructions and click Next to continue.

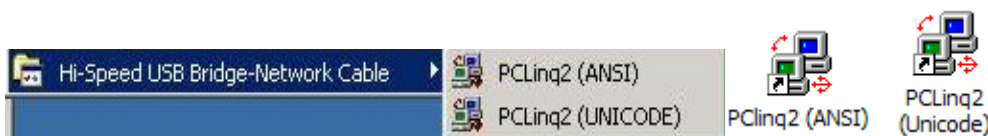



USER MANUAL for USB2.0 Data-Link/ Bridge-Network

Wait until Setup has finished installing the PCLinq2 Hi-Speed USB Bridge-Network Cable Driver. When it prompts you that installation is complete, click **Finish** to end.



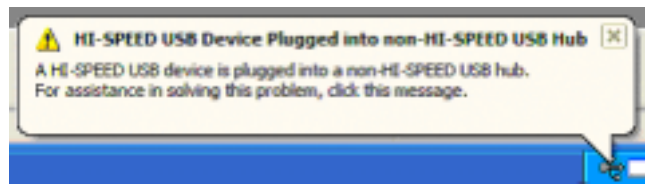
3. After installation is complete, click on the Program Files and check if the PCLinq2 Hi-Speed USB Bridge-Network Cable program folder was created. For Windows XP and 2000, there are two programs provided: ANSI mode and Unicode mode. For Windows 98 and ME, only the ANSI mode is provided. Check also your Desktop screen if there are shortcuts created for the PCLinq2 programs.



4. Now locate the USB port of your computer and plug in the PCLinq2 Hi-Speed USB Bridge-Network Cable. If your computer has a Hi-Speed USB 2.0 port, plug the cable into this port. The USB port usually has the imprinted  symbol.

Note: If you plug the cable on a non-Hi-Speed USB port, Windows will show an alert message telling you that it is plugged into a non-Hi-Speed USB hub. You can still continue to use the PCLinq2 USB bridge cable but it will run at a reduced speed. Windows will recommend you to add a Hi-Speed USB host controller to your computer to obtain maximum performance.

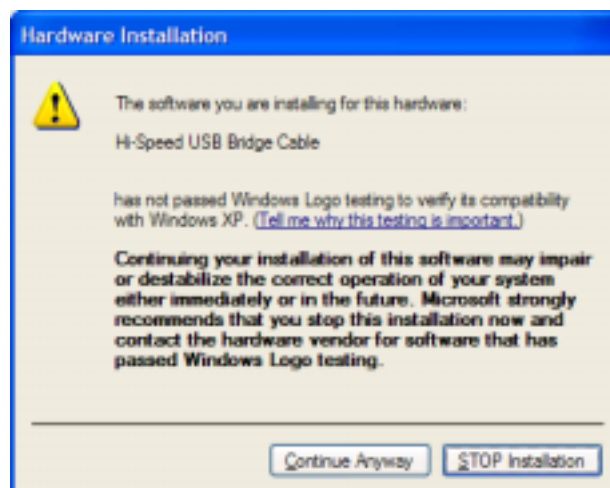
USER MANUAL for USB2.0 Data-Link/ Bridge-Network



5. Wait till Windows detects the Hi-Speed USB Bridge Cable and prompts you for the device driver location. If prompted, select to install the software automatically (Recommended) and click **Next** to continue.



6. Windows will then detect the preloaded driver. Before Windows installs the driver, it may prompt you that this device driver (Hi-Speed USB Bridge Cable) has not yet passed Windows XP Logo compatibility. Click **Continue Anyway**.

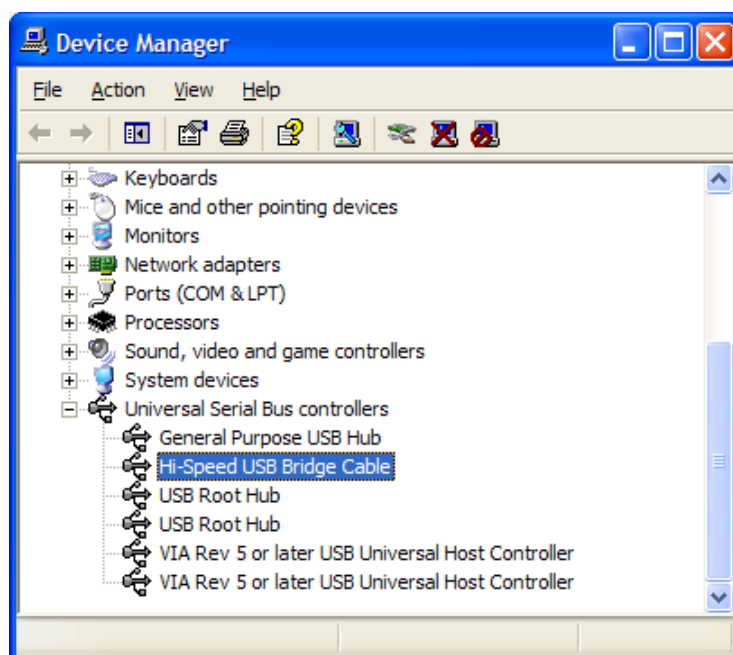


USER MANUAL for USB2.0 Data-Link/ Bridge-Network

7. Windows will then start to install the driver for the USB-USB Bridge Cable2.0 Once installation is complete, Windows will prompt you that it has finished. Click **Finish** to continue.



8. You can also verify the driver installation under Device Manager. Right-click on **My Computer**. Then click **Hardware-Device Manager**. Click on Universal Serial Bus controllers and check if there is the **Hi-Speed USB Bridge Cable**.



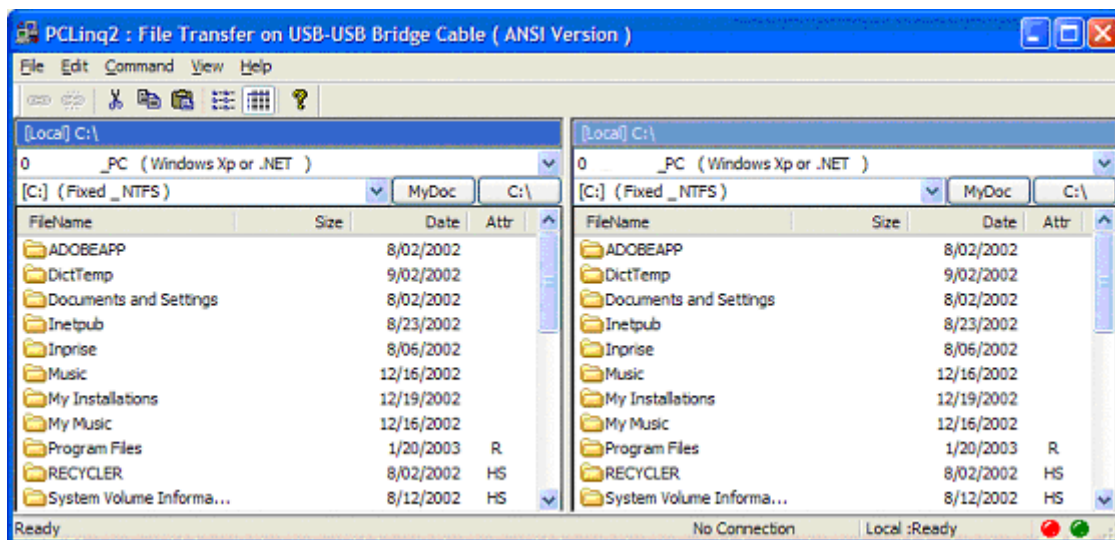
USER MANUAL for USB2.0 Data-Link/ Bridge-Network

Running the PCLinq2 Program

The PCLinq2 Hi-Speed USB Bridge Cable allows you to easily link two computers by plugging each end of the cable into the USB port of both computers. Before you can start using the PCLinq2 program, you need first to run Setup program on both computers and install the bridge cable as mentioned in the previous section.



PCLinq2 is the application program used to control the file sharing and data transfer of the linked computers (also known as the local PC and the remote PC). After you have successfully completed the Setup program and installed the PCLinq2 bridge cable, you simply double-click on the PCLinq2 shortcut found on your desktop screen. The PCLinq2 File Transfer program will appear as follows:

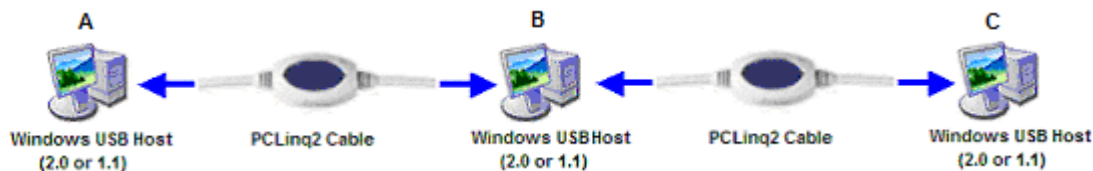


With PCLinq2, you can control both the local and remote PCs and do the following:

- (1) Display files/folders
- (2) Open files/folders
- (3) Create files/folders
- (4) Delete files/folders

USER MANUAL for USB2.0 Data-Link/ Bridge-Network

- (5) Copy files/folders
- (6) Move files/folders
- (7) Change file/folder names
- (8) Multiple Cable Select – if there are three computers linked together using two PCLinq2 bridge cable (see Figure below). PCLinq2 can allow you to control two computers (A-to-B or B-to-C) at a time.

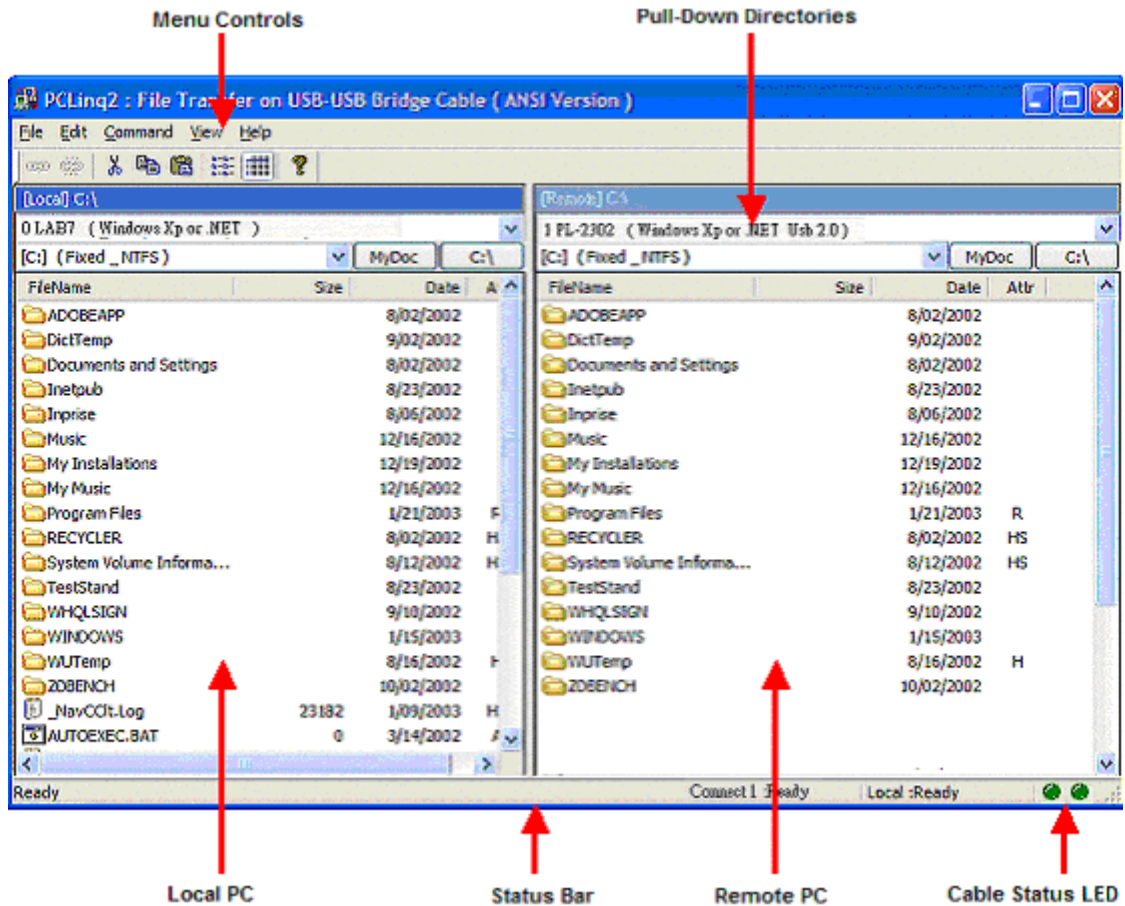


To start using PCLinq2:

1. Run Setup program on both (local and remote) computers.
2. Plug the one end of the PCLinq2 Hi-Speed USB Bridge cable into the USB port of one computer and the other end into the USB port of the other computer.
3. Wait for Windows to detect the cable on each computer and check if it is properly installed.
4. Double-click on the PCLinq2 program. It is important that you use the same program mode for each computer. If you are using ANSI mode, then both computers should be running the ANSI mode program. Check the Status LED on the bottom right of the program dialog box if it is ready or not. A green LED signifies a ready status while a red LED means not ready or not found. Make sure that the program shows two green LEDs to indicate a linked connection.

Note: The PCLinq2 Unicode program is only available under Windows 2000 and XP. The PCLinq2 ANSI program is available for all Windows OS versions.

USER MANUAL for USB2.0 Data-Link/ Bridge-Network



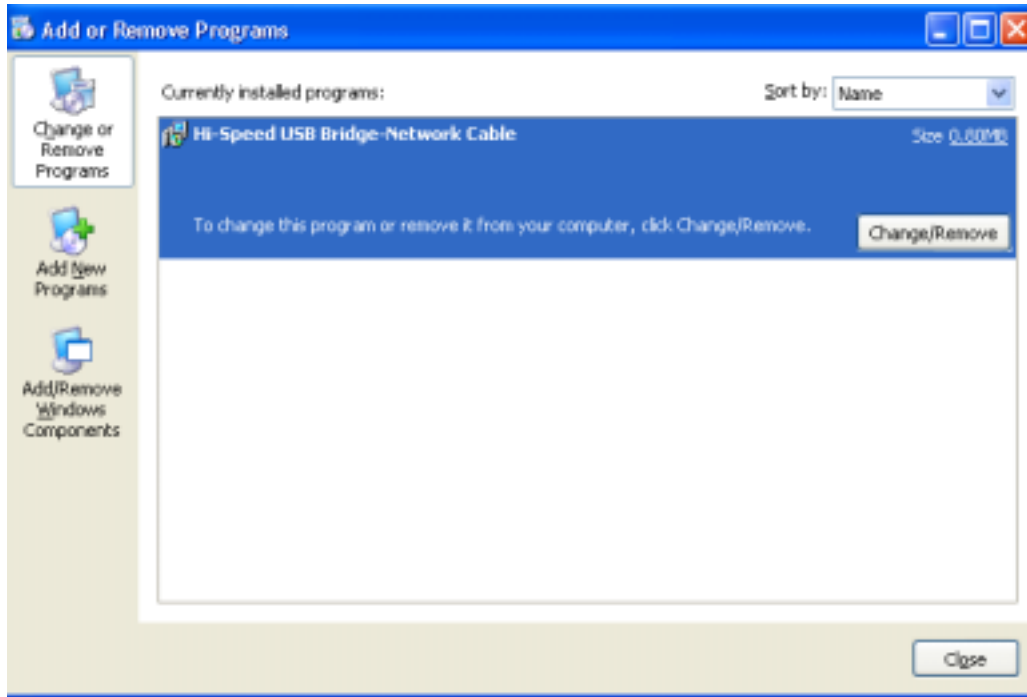
5. Once a connection has been established, you simply drag-and-drop the files or folders you want to transfer to the other computer. You can change disk drives or directories but clicking on the pull-down directory menu. Use the File menu for other functions of the program.

USER MANUAL for USB2.0 Data-Link/ Bridge-Network

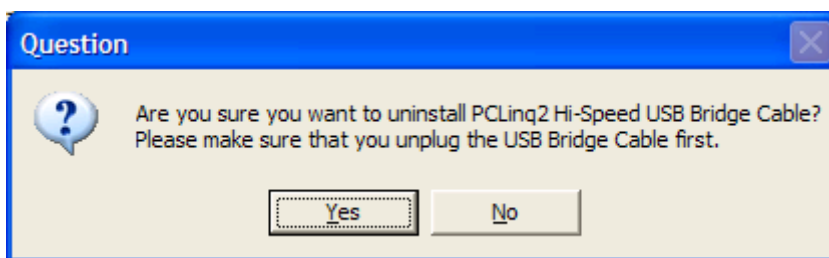
Uninstalling the PCLinq2 Bridge Cable

It is easy to uninstall the PCLinq2 Hi-Speed USB Bridge Cable driver.

1. Make sure to first close all PCLinq2 programs and unplug the USB Bridge cable.
2. Go to Control Panel and double-click on Add or Remove Programs.
3. Look for the PCLinq2 Hi-Speed USB Bridge Cable and click Change/Remove button.



4. The Setup program will prompt you whether you are sure to uninstall or not. Make sure that you have unplugged the USB Bridge cable and click Yes to continue.



5. The Setup program will then start to uninstall the PCLinq2 Hi-Speed USB Bridge Cable driver. Wait for Setup to complete uninstallation.
6. After Setup has completely uninstalled the driver and programs, it will prompt you to restart Windows. It is recommended that you restart your computer.

USER MANUAL for USB2.0 Data-Link/ Bridge-Network



Disclaimer

All the information in this document is subject to change without prior notice. The manufacturer does not make any representations or any warranties (implied or otherwise) regarding the accuracy and completeness of this document and shall in no event be liable for any loss of profit or any other commercial damage, including but not limited to special, incidental, consequential, or other damages.

No part of this document may be reproduced or transmitted in any form by any means without the express written permission of the manufacturer.

All brand names and product names used in this document are trademarks or registered trademarks of their respective holders.

USER MANUAL for USB2.0 Data-Link/ Bridge-Network

Bridge-Network Cable

Overview

The USB Networking Cable provides a quick and easy solution to network up to 17 USB computers via hot Plug & Play technology without adding any network interface cards. It is suitable for small offices, home offices, mobile users, and network gamers. With the USB Network Bridge Cable, users can play multi-player games, share files, printers, peripheral equipment, and more.

Features

- USB host to host communication
- Single cable solution for network communication
- Standard Windows Explorer user interface
- Maximum Data transfer rate: Over 5 Mbps
- Construct USB Network up to 17 PCs
- Sharing resources, such as Printers, CD-ROMs, Modems, Scanners, etc.
- Support TCP/IP, NetBEUI, IPX/SPX protocols
- Full NDIS driver implementation
- No external power needed
- Compliant with USB specification version 1.1&2.0
- USB full and High speed connection
- Hot PnP for easy use
- Suitable for SOHO and mobile network environment

System Requirements

- Windows 98SE/2000/ME/XP

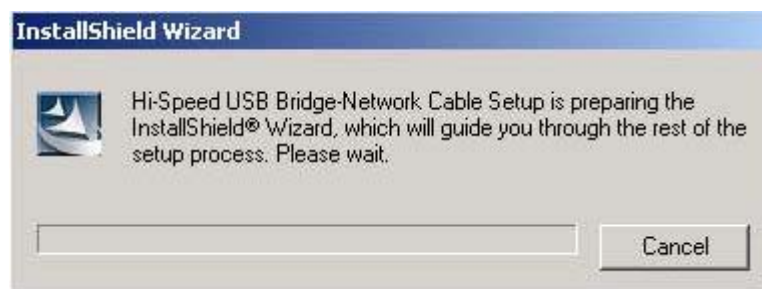
USER MANUAL for USB2.0 Data-Link/ Bridge-Network

Running the Setup Program

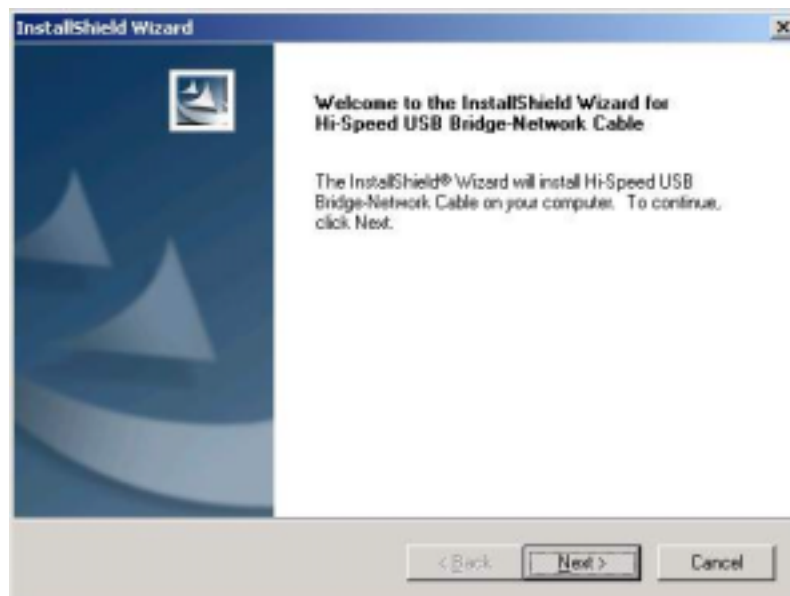
Before you plug-in and use the Hi-Speed USB Bridge-Network Cable for the first time in your computer, you first have to run the SETUP InstallShield program to preload the drivers and programs into your computer. This step is necessary in order for you to use the USB Bridge Cable properly under Windows operating system.

The following steps will show how to install the Hi-Speed USB Bridge-Network Cable under Windows XP. If you are using other Windows OS versions, the installation is also the same but the look of the dialogue boxes may be a bit different. This Setup program only supports Windows 98SE, ME, 2000, and XP.

1. Power on your computer and boot to Windows. Load Driver CD and run the **SETUP.EXE** executable program file. The Setup program will then start to prepare the InstallShield Wizard that will guide you through the rest of the setup process.

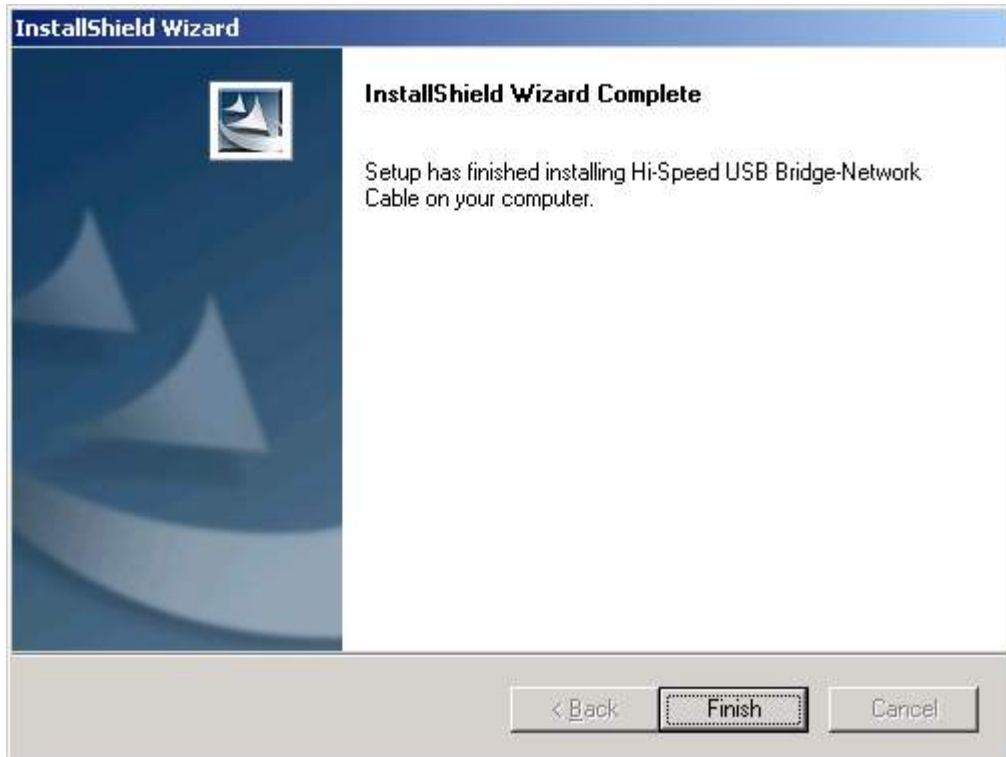



2. The InstallShield Wizard welcome dialog box will then appear to display some information regarding the Setup program. Follow the instructions and click Next to continue.



USER MANUAL for USB2.0 Data-Link/ Bridge-Network

3. Wait until Setup has finished installing the Hi-Speed USB Bridge-Network Cable Driver. When it prompts you that installation is complete, click Finish to end.



4. Now locate the USB port of your computer and plug in the PCLinQ2 Hi-Speed USB Bridge-Network Cable. If your computer has a Hi-Speed USB 2.0 port, plug the cable into this port. The USB port usually has the imprinted  symbol.

USER MANUAL for USB2.0 Data-Link/ Bridge-Network

5. Wait till Windows detects the Hi-Speed USB Bridge-Network Cable and prompts you for the device driver location. If prompted, select to install the software automatically (Recommended) and click **Next** to continue.



6. Windows will then detect the preloaded driver. Before Windows installs the driver, it may prompt you that this device driver (**Hi-Speed USB-USB Network Adapter**) has not yet passed Windows XP Logo compatibility. Click **Continue Anyway**.

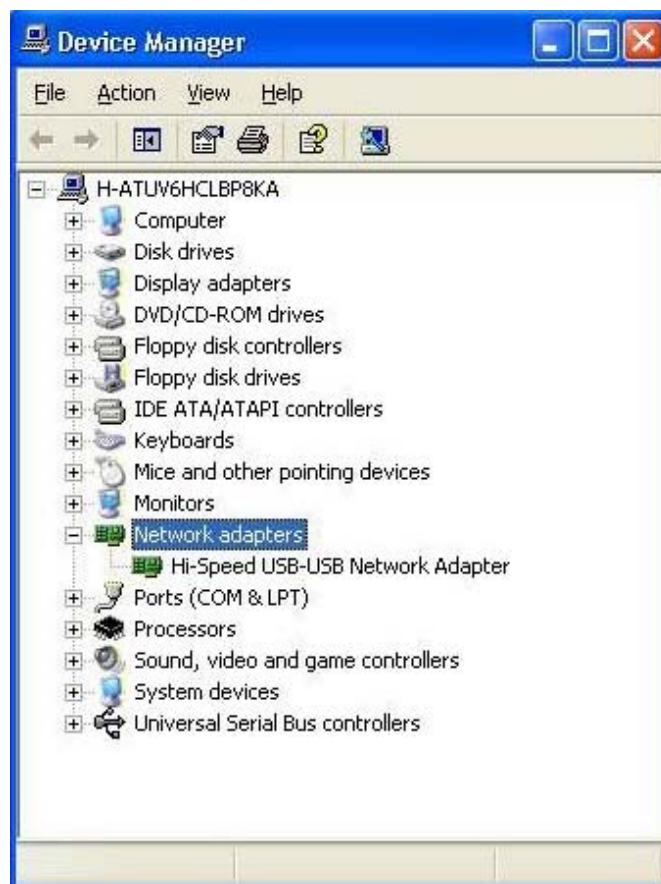


USER MANUAL for USB2.0 Data-Link/ Bridge-Network

7. Windows will then start to install the driver for the **Hi-Speed USB-USB Network Adapter** Once installation is complete, Windows will prompt you that it has finished. Click **Finish** to continue.



8. You can also verify the driver installation under Device Manager. Right-click on **My Computer**. Then click **Device Manager**. Click on **Network adapters** and check if there is the **Hi-Speed USB-USB Network Adapter**.



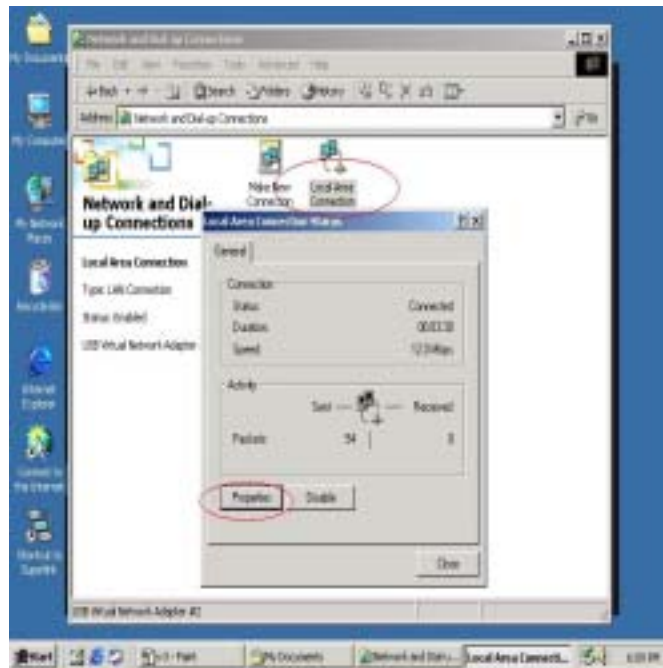
Bridge-Network software application setting

Steps by Steps to enable Internet Connection Sharing on a network connection:

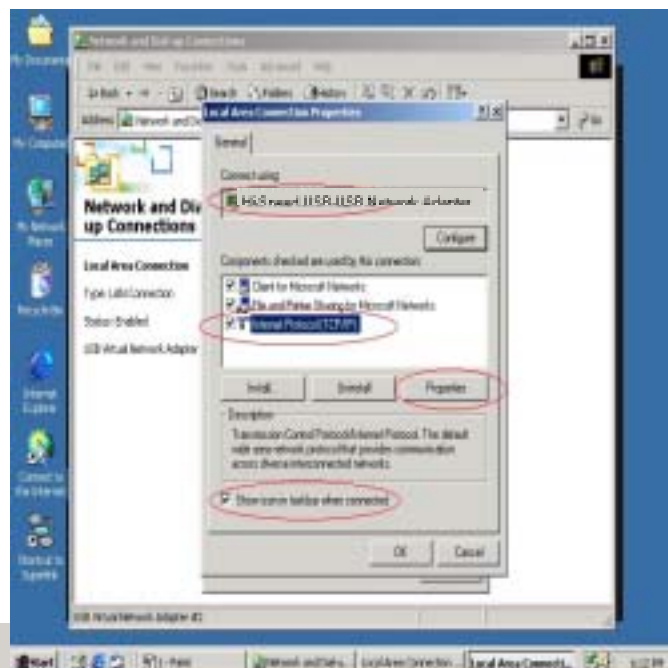
1. Peer-to-Peer File-Sharing with Bridge-Network connection.
2. (For Windows 98/ME/2K/XP, both sides setting are the same)

Manual IP address setting.

- (1) Open Network Connections (Click Start, click Control Panel, click Network and Internet Connections, and then click Network Connections).

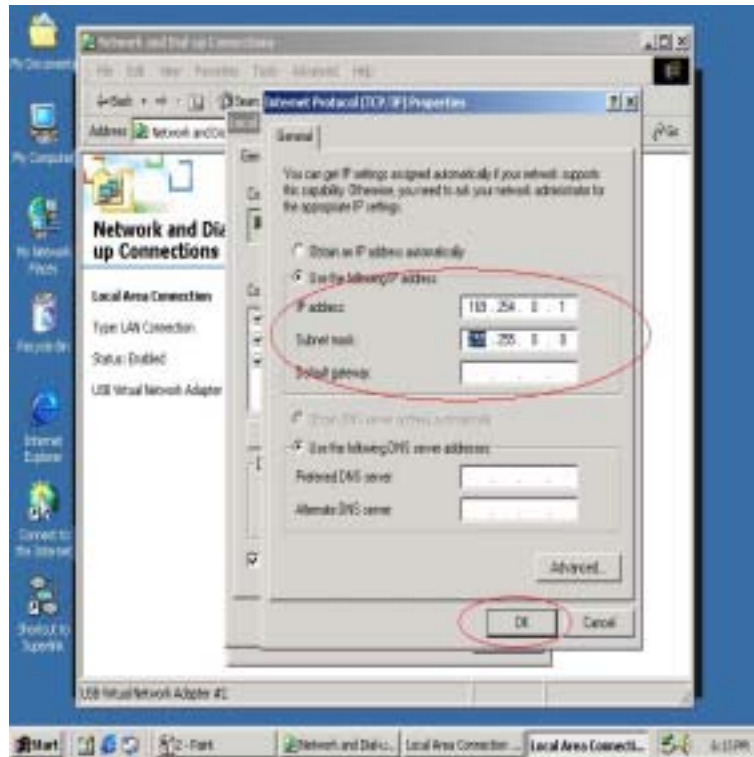


- (2) Select "Internet Protocol (TCP/IP) ", and click "Properties".



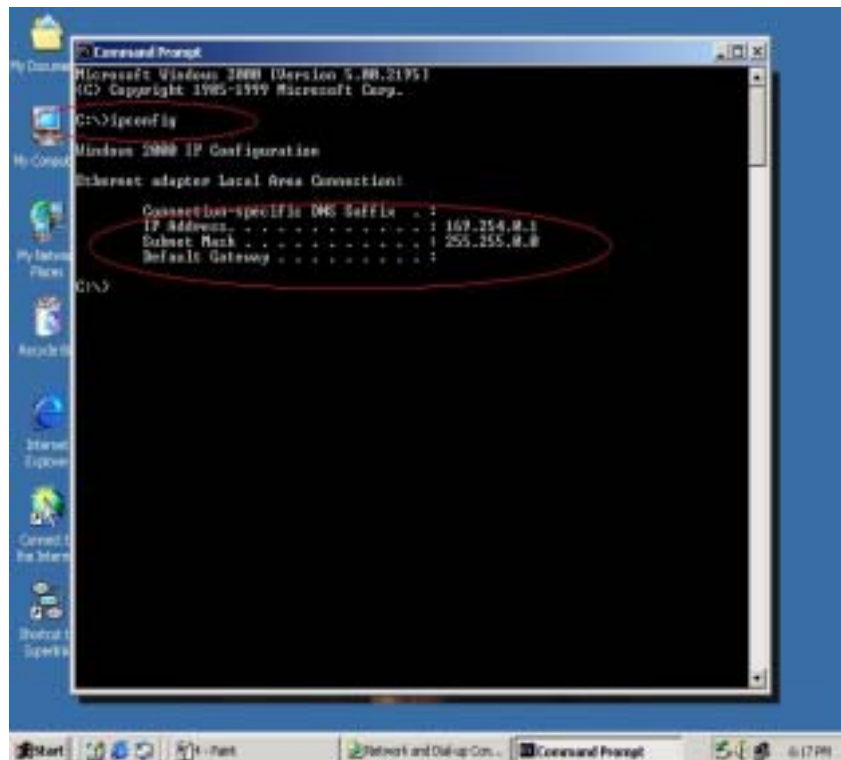
USER MANUAL for USB2.0 Data-Link/ Bridge-Network

(3) Fill in driver default IP address value : "169.254.x.x", and click "OK".



(4) User can check the connection information to verify whether IP address is settle done.

(5) Or use windows command prompt : "IPCONFIG" to check the connection status.

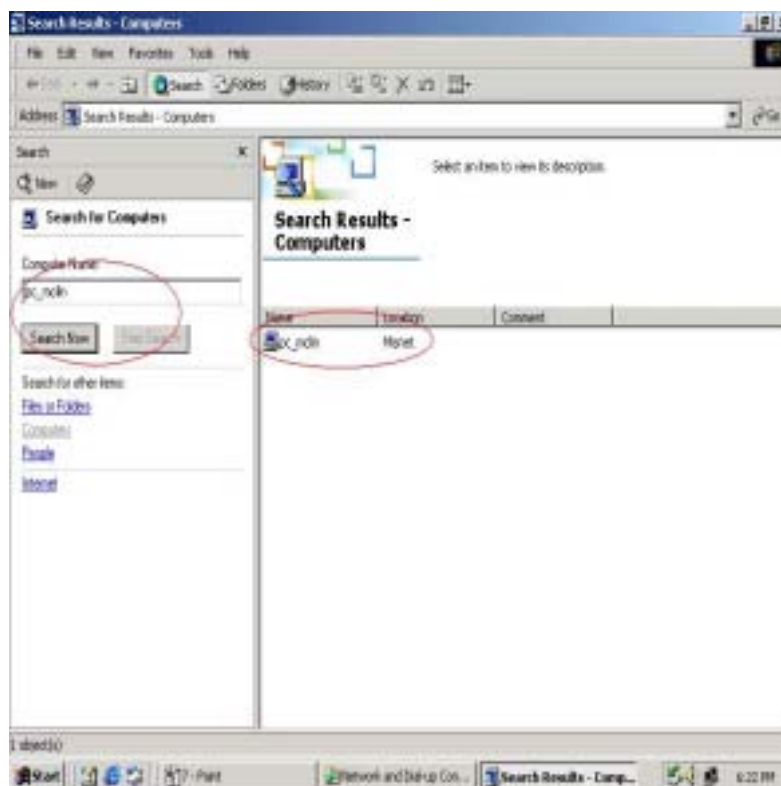


USER MANUAL for USB2.0 Data-Link/ Bridge-Network

(6) Another connection of Bridge-Network setting in another computer is the same. User can use “My Network Places : search for computer” to find the connected computer.



Fill in the computer name to search target computer in the network.



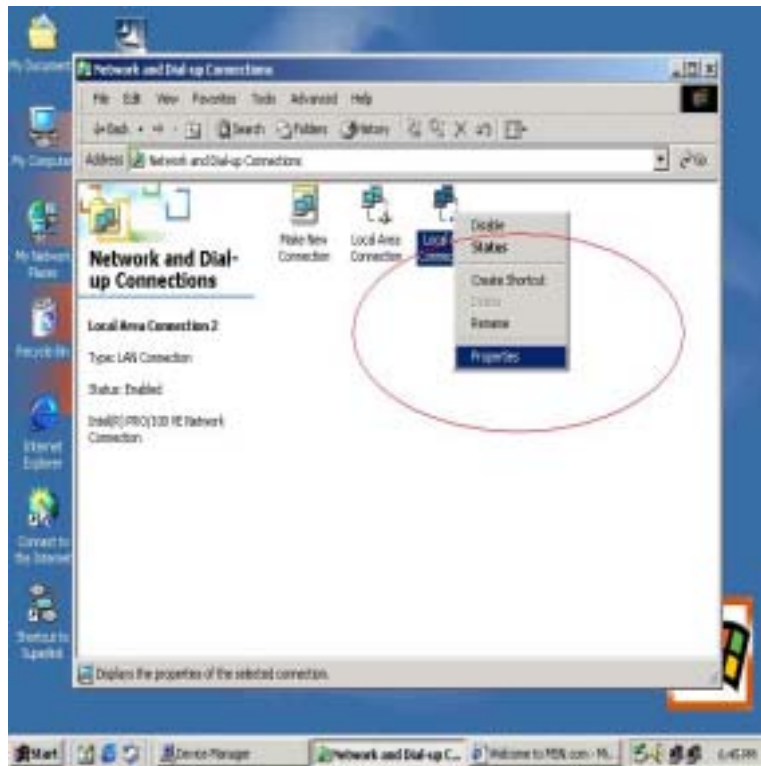
Auto-detected IP address setting

User have to wait for windows O.S. assigning IP address about 2~3 minutes while connected. And the following steps are same as manual IP address setting.

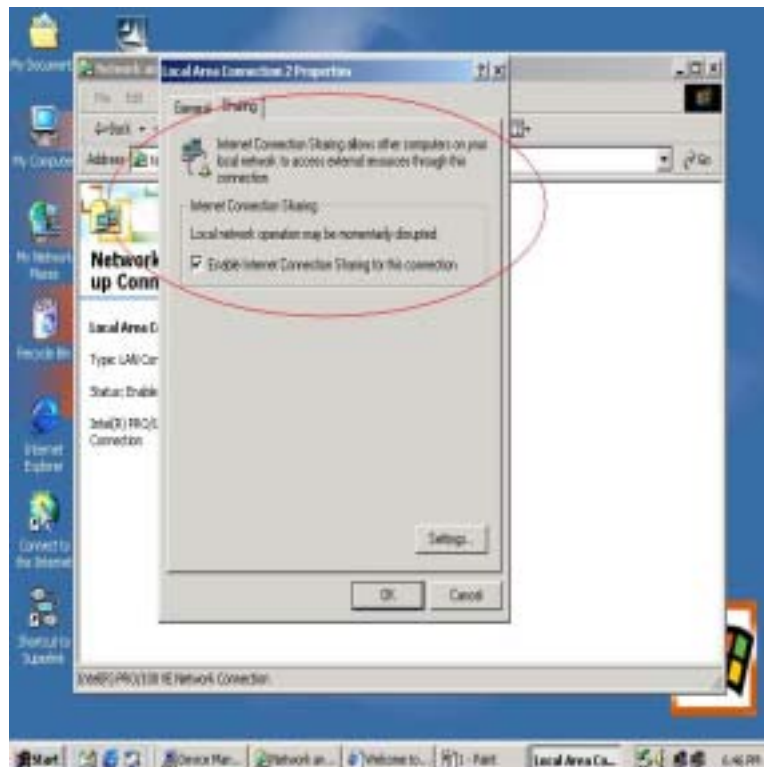
USER MANUAL for USB2.0 Data-Link/ Bridge-Network

3. Two computers share in internet resource with **Bridge-Network connection,(For 2K/XP),** Setup A-computer which is external internet connection. (LAN or Modem)

- (1) Enable the local connection (internet connection) properties to setup internet sharing.
If only one local Area Connection Icon on the folder, you can't found the Sharing selection item..



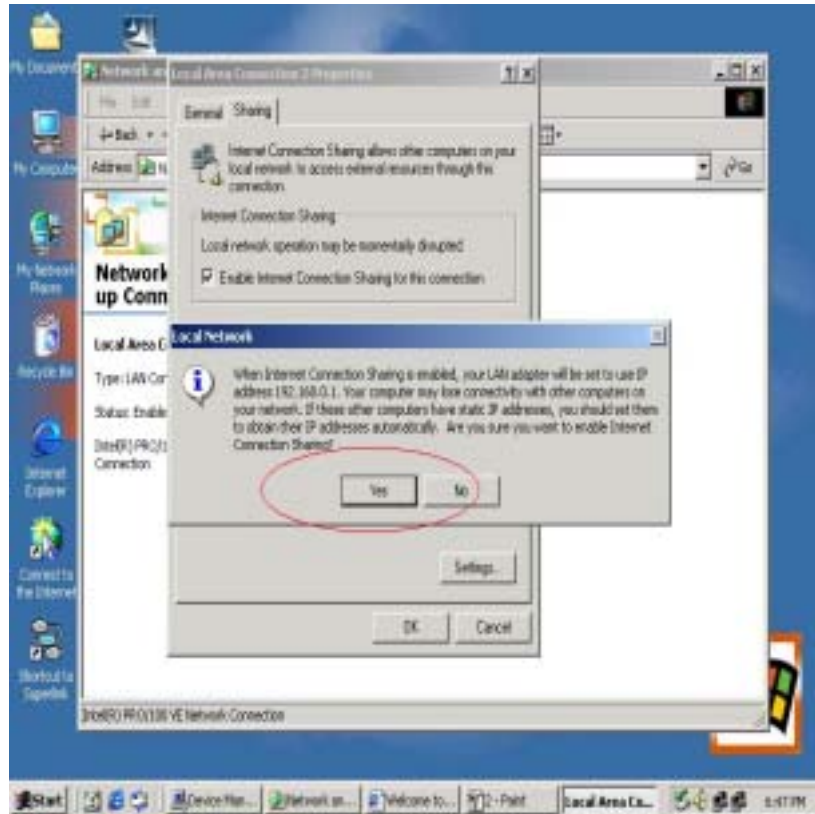
- (2) Select "Sharing", and click "Enable Internet Connection Sharing for this connection " and click "OK"



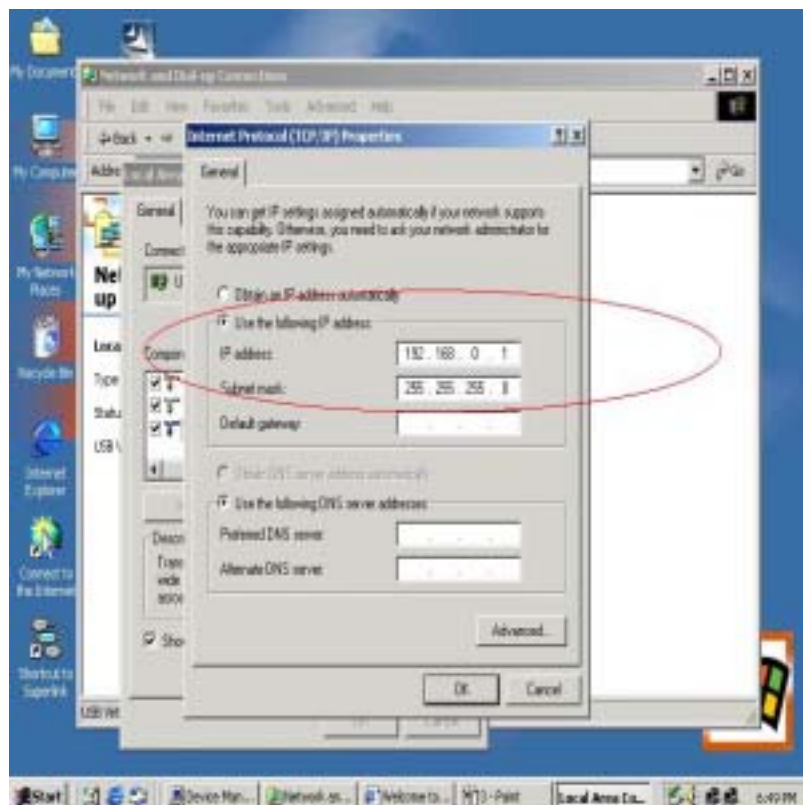
- (3) Windows O.S. will force to assign a default IP address (192.168.0.1) for this sharing,

USER MANUAL for USB2.0 Data-Link/ Bridge-Network

please just click “OK”.



Virtual-Network local connection will be forced to set IP address as below :



Setup B-computer which is only local connection with A-computer.

(1) Enable the local connection (USB Bridge-Network) properties to setup the suitable IP

USER MANUAL for USB2.0 Data-Link/ Bridge-Network

address/Mask/gateway :

IP address : 192.168.0.x

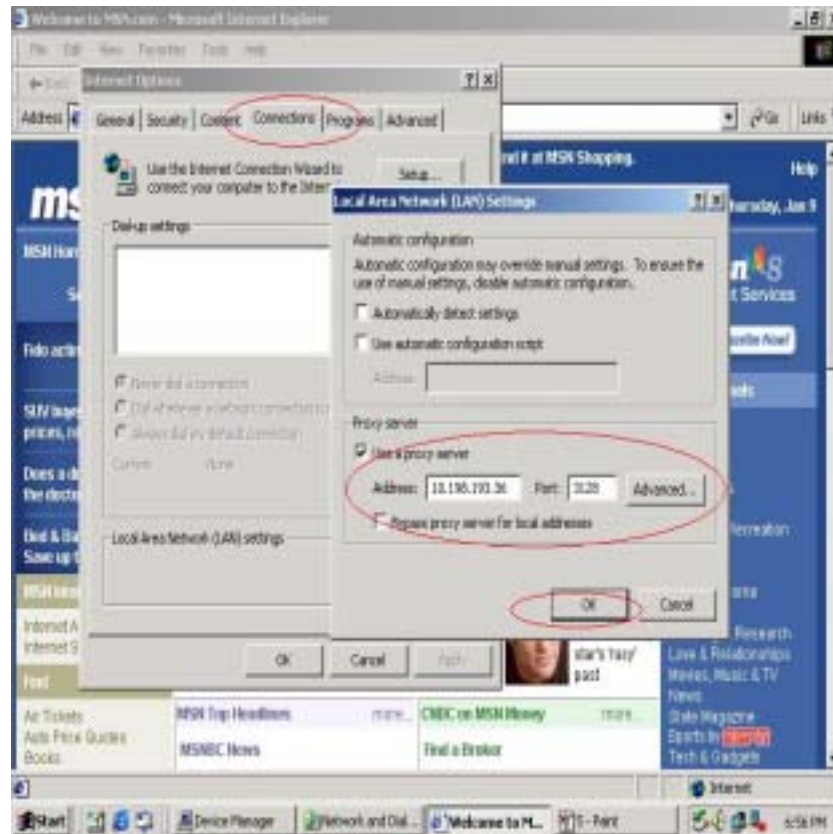
Subnet mask : 255.255.255.0

Default gateway : 192.168.0.1

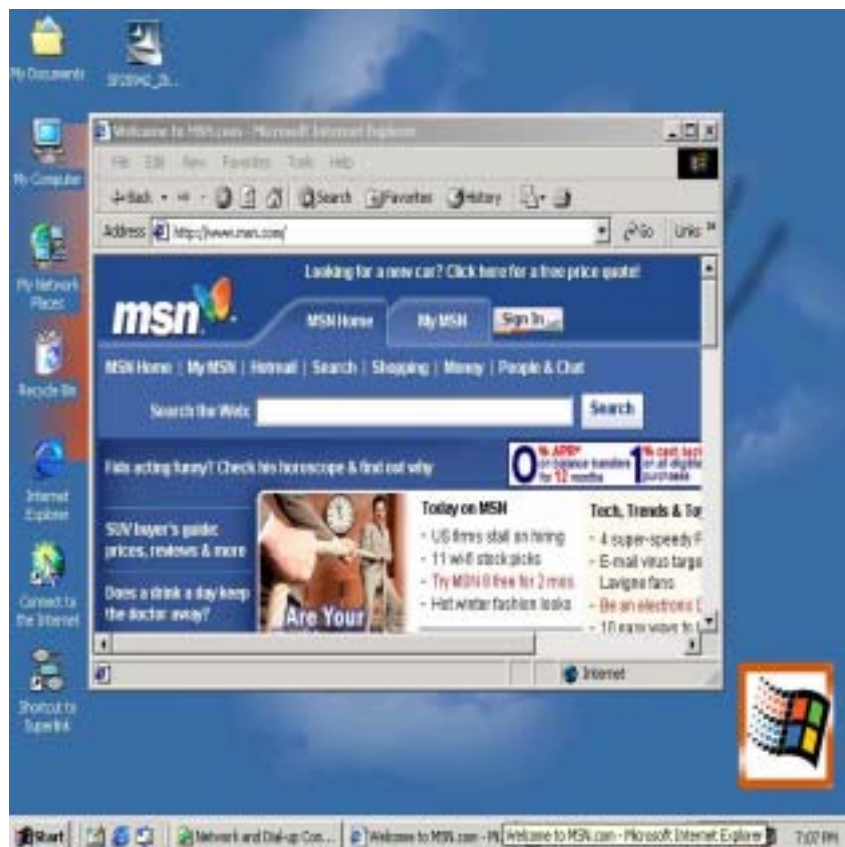


(2) Also, do not forget to set correct Internet connection value which should be same as A-computer.

USER MANUAL for USB2.0 Data-Link/ Bridge-Network



(3) B-computer is available to share the internet resource from A-computer.



USER MANUAL for USB2.0 Data-Link/ Bridge-Network

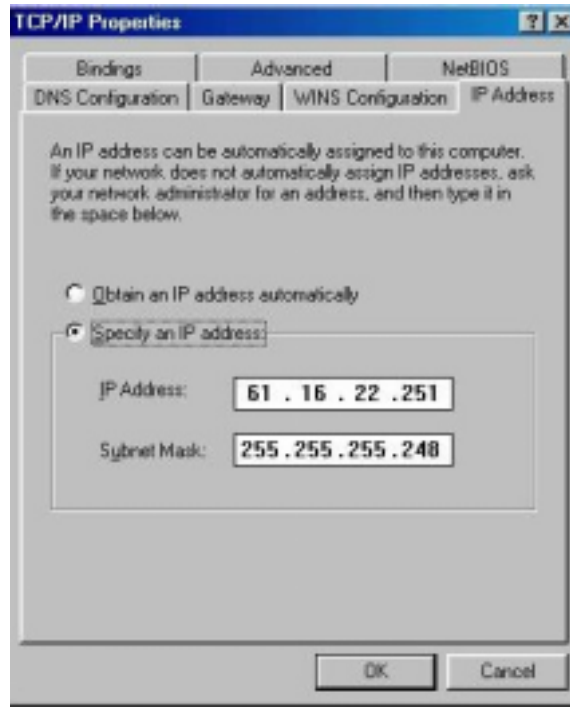
4. Two computers share in internet resource with Bridge-Network connection(For98SE/ME) , Setup A-computer which is external internet connection. (LAN or Modem)

FOR WIN98SE

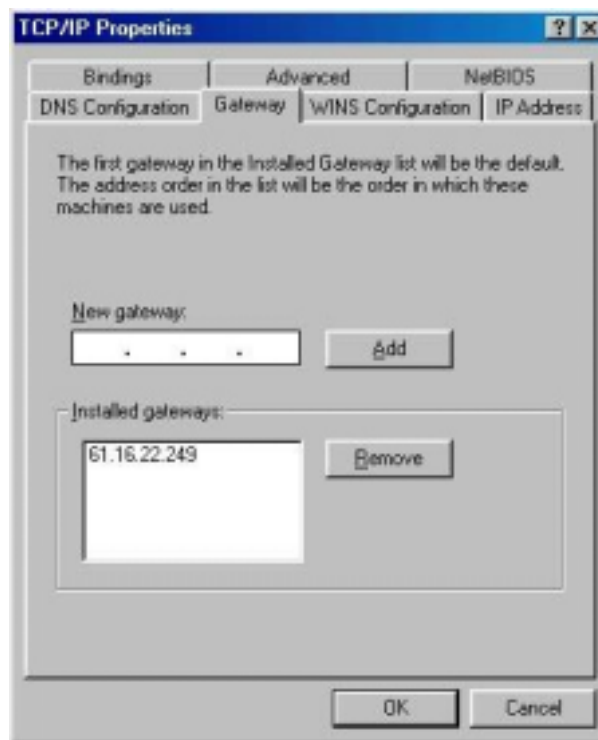
1. Setup Fixed IP (When you don't have DHCP Server, you only have one Fixed IP)

PS . When you have DHCP Server, you don't setup anymore.

- ◆ Network Neighborhood>Properties>TCP/IP > Properties
- ◆ Setup :IP Address (Please key-in ISP give you)

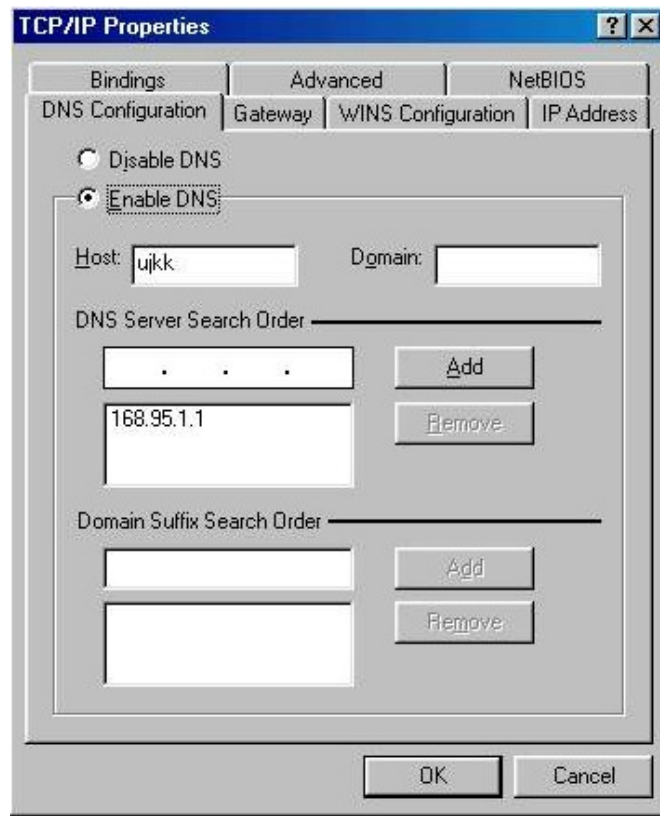


- ◆ Setup : Gateway

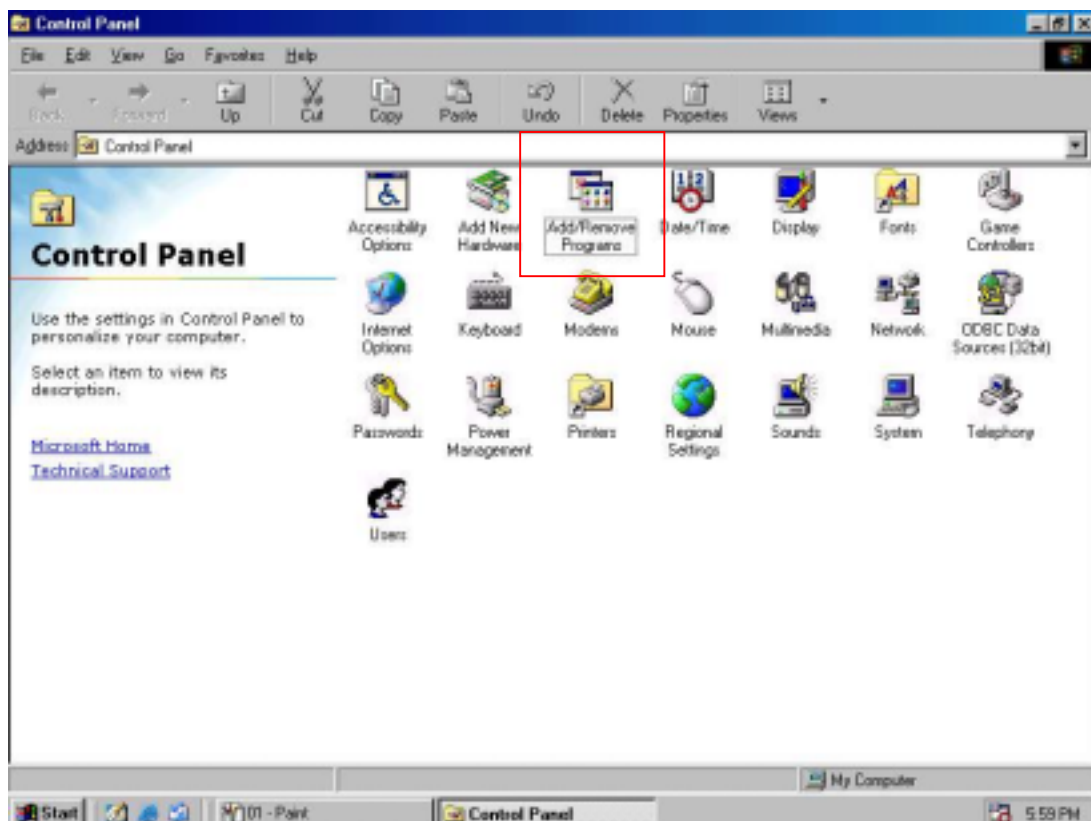


USER MANUAL for USB2.0 Data-Link/ Bridge-Network

- ◆ Setup : DNS(Domain Name Server)

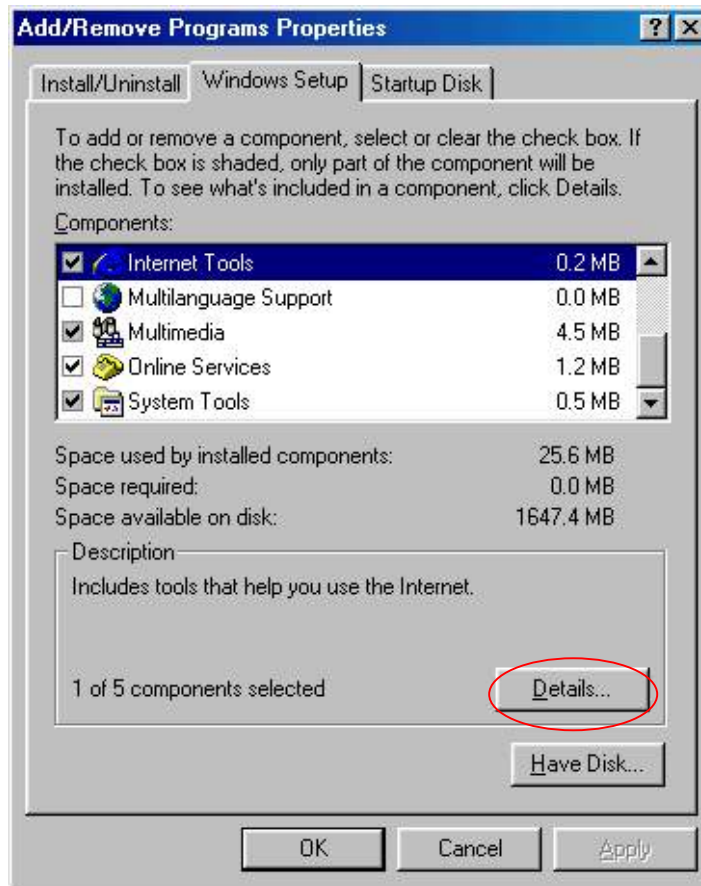


2. Click “Add/Remove programs”

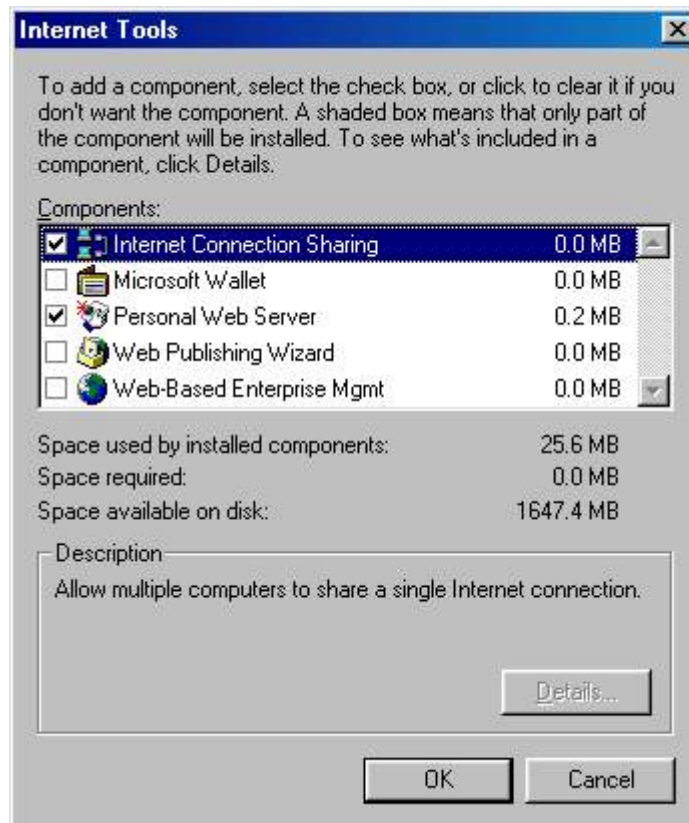


USER MANUAL for USB2.0 Data-Link/ Bridge-Network

3. choose "Windows Setup">Internet Tools and Click "Details"



4. choose "Internet Connection Sharing" and click "OK"

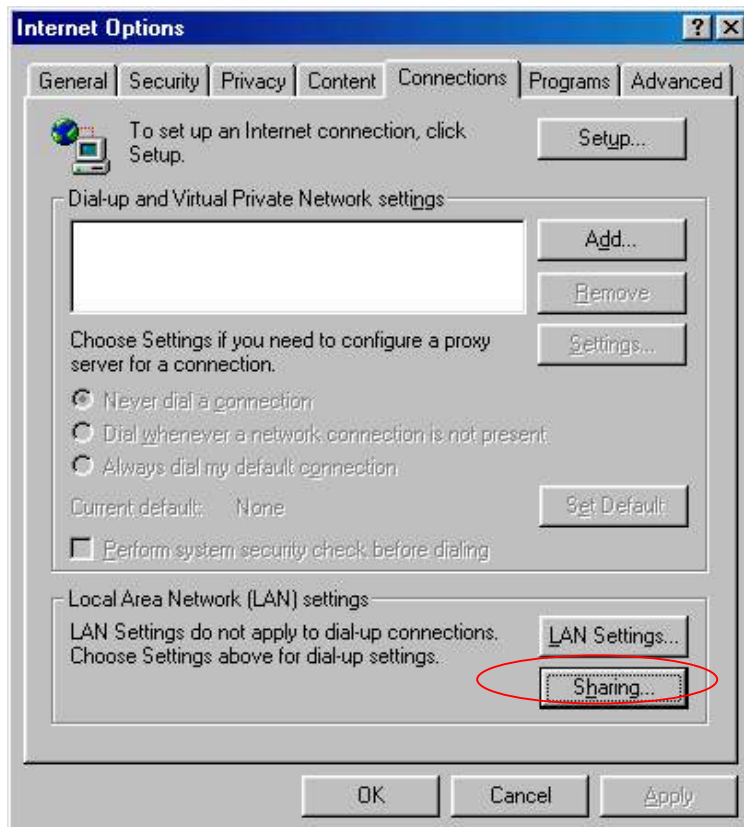


USER MANUAL for USB2.0 Data-Link/ Bridge-Network

5. Install "Internet Connection Sharing Wizard", Click "Cancel"

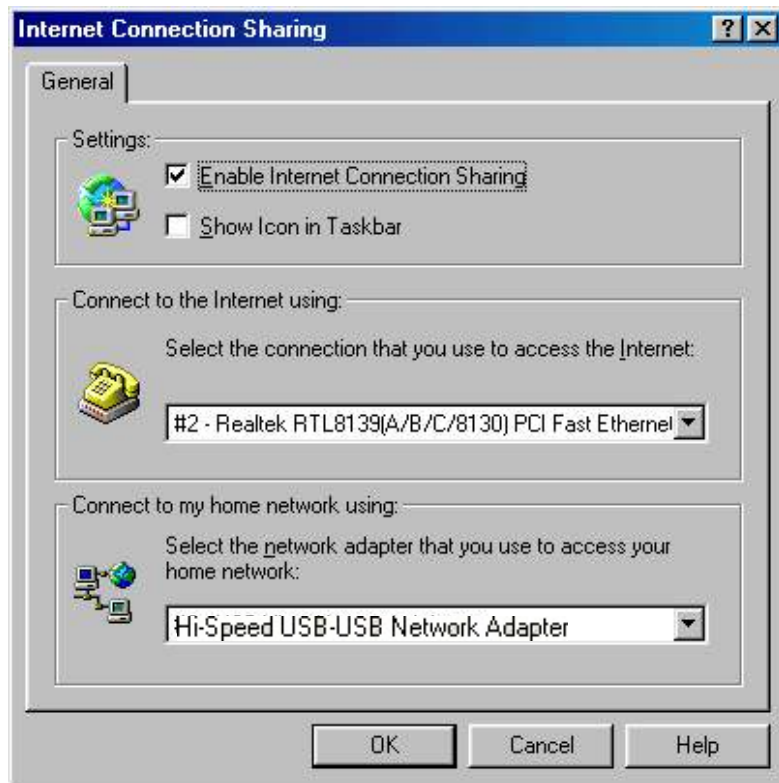


6. Click "start program file Control Panel Internet Options>Connections>"Sharing"

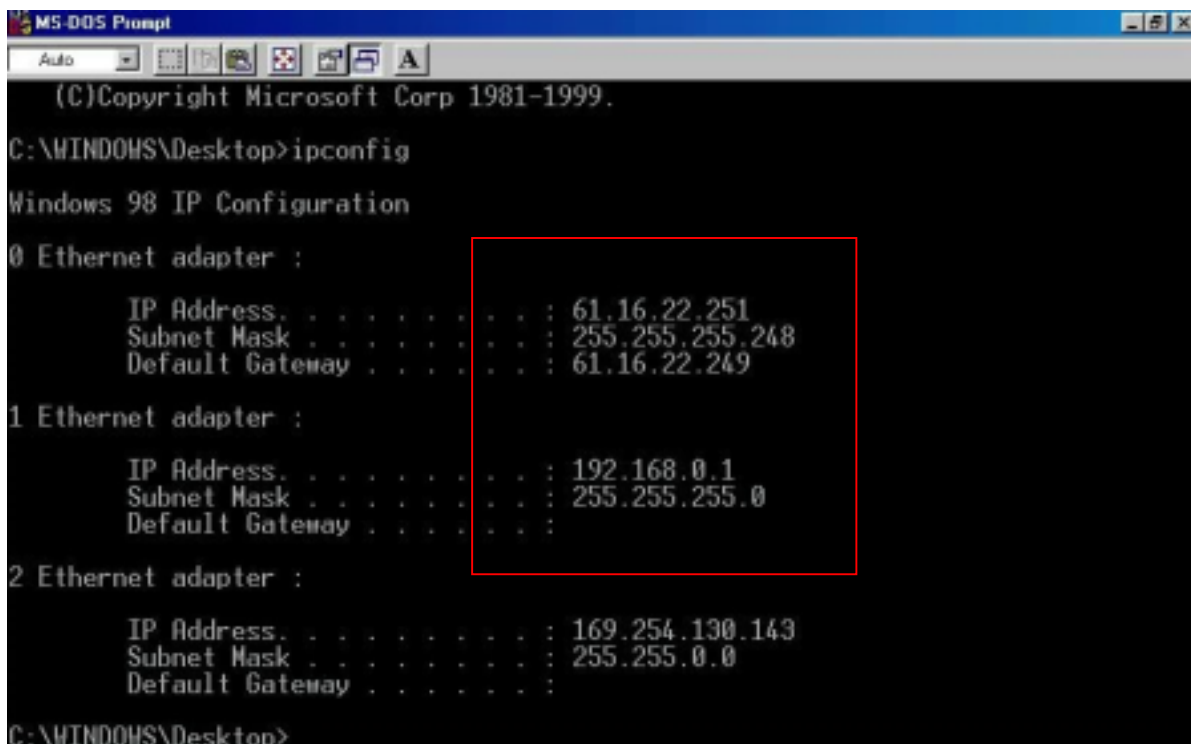


1. Please change "Connect to the Internet using" and "Connect to my home network using"
If you see lot Network Adapter item ,you must choose the latest Network Adapter

USER MANUAL for USB2.0 Data-Link/ Bridge-Network



7. Use windows command prompt : "IPCONFIG" to check the connection status.



8. Other PC only connect cable (you don't setup IP Address)

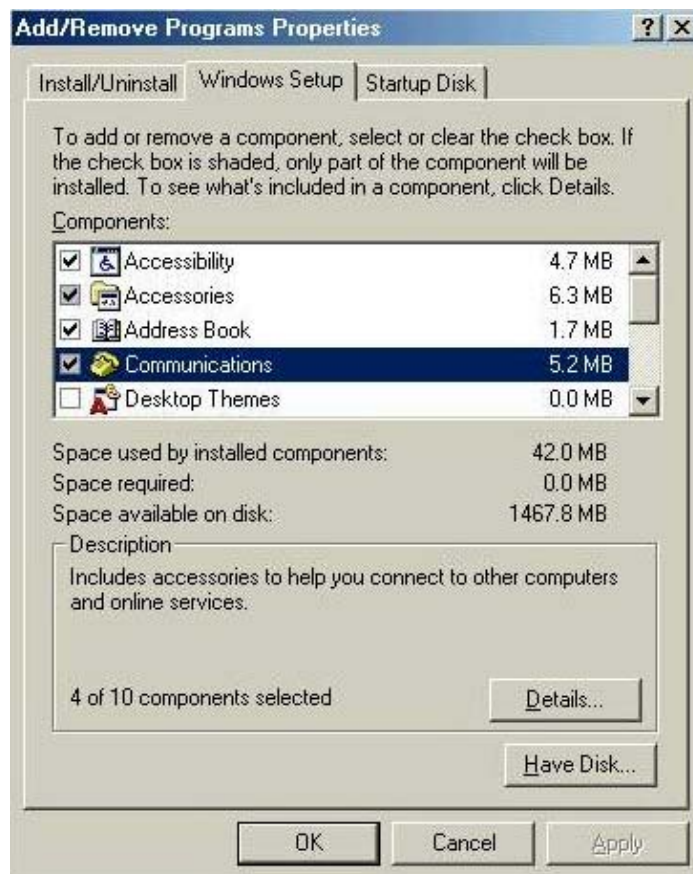
USER MANUAL for USB2.0 Data-Link/ Bridge-Network



9. use windows command prompt : "IPCONFIG" to check the connection status.
10. Finish

FOR WINME

1. Please Step by Step: for win98 1~3
2. Click windows Setup > communications >Details
Choose "Internet Connect Sharing" and click "OK"

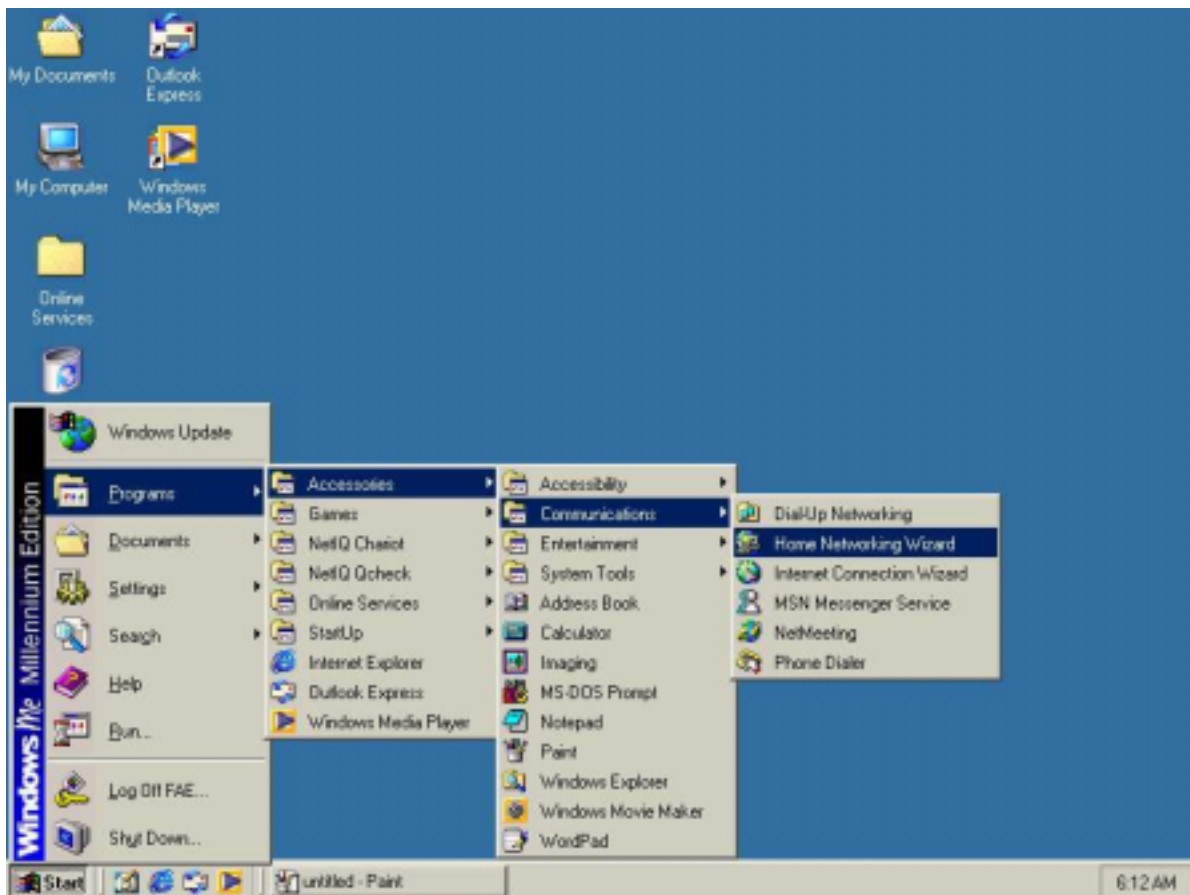


USER MANUAL for USB2.0 Data-Link/ Bridge-Network

3. Choose Next or Cancel , Click “Cancel”



4. Click “start programs Accessories connections ”Home Networking Wizard”

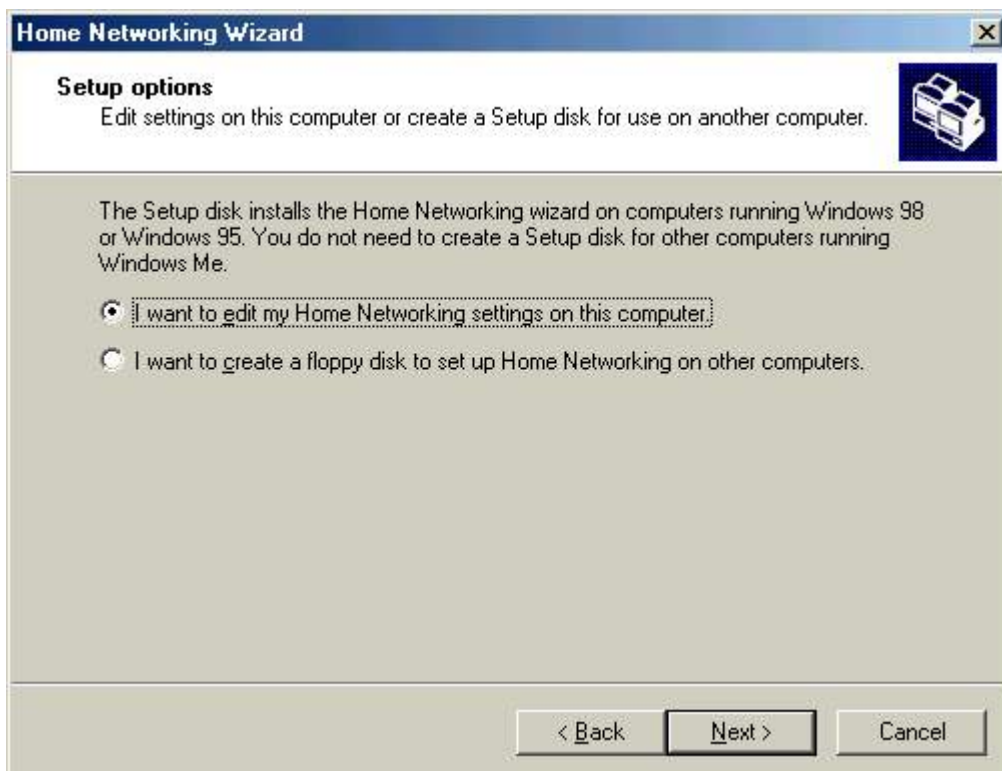


5. Click “Next” to continue

USER MANUAL for USB2.0 Data-Link/ Bridge-Network

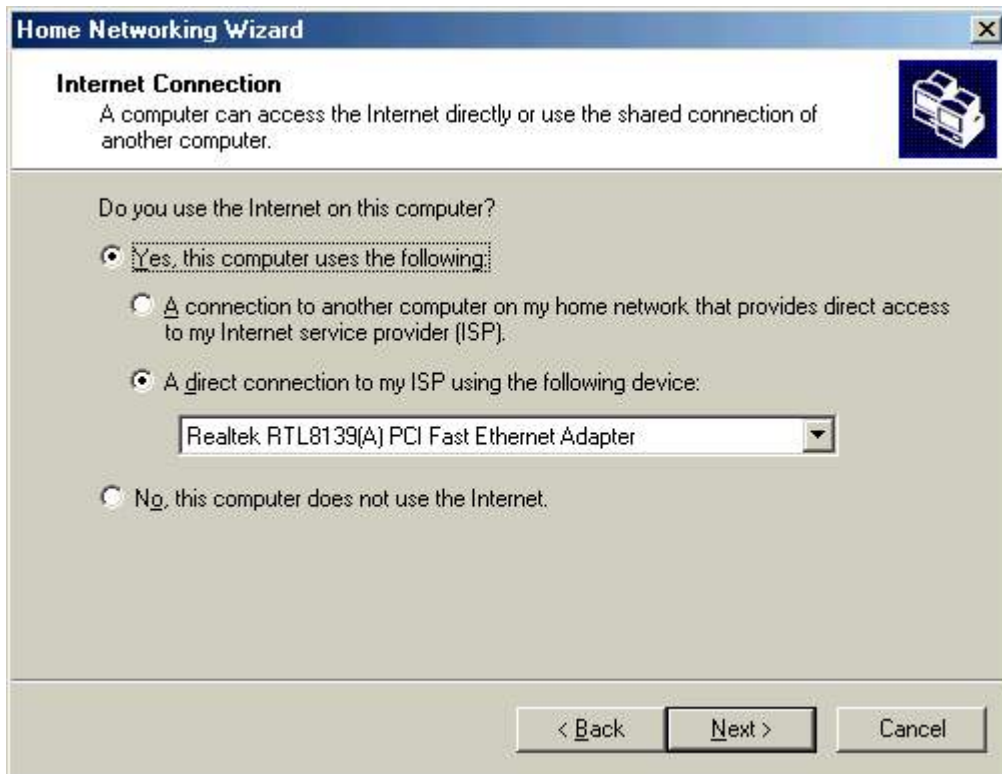


6. Choose "I want to edit my Home Networking setting on this computer .Click "Next"

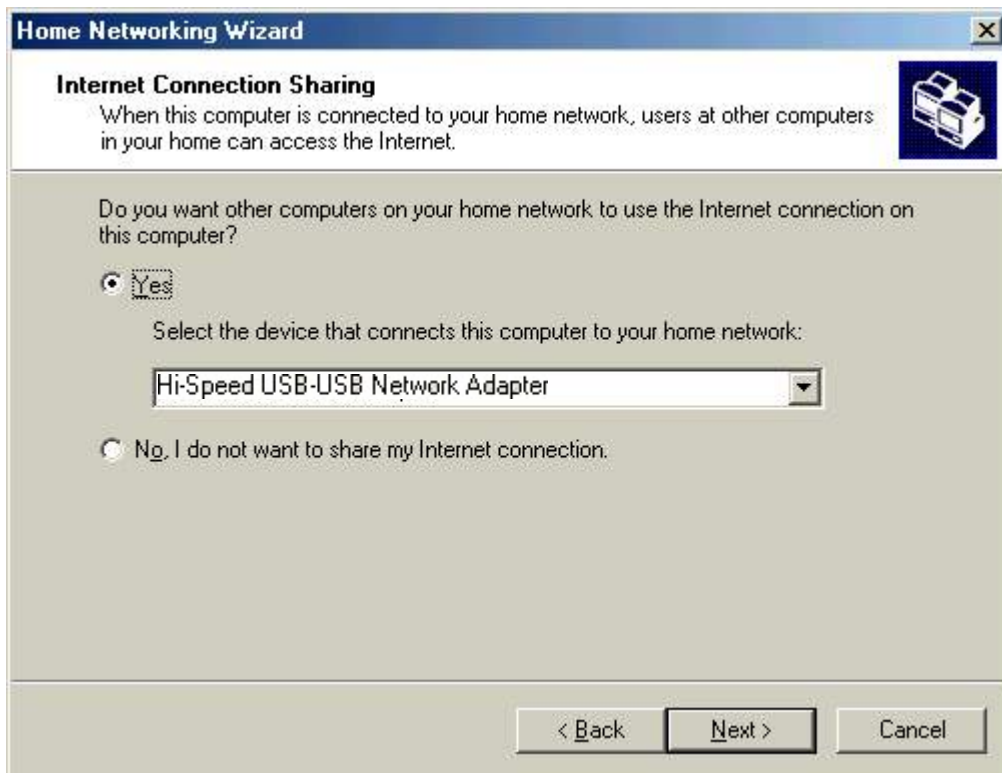


USER MANUAL for USB2.0 Data-Link/ Bridge-Network

7. Click “Next”



8. Click “Next”



USER MANUAL for USB2.0 Data-Link/ Bridge-Network

9. Click “Next”

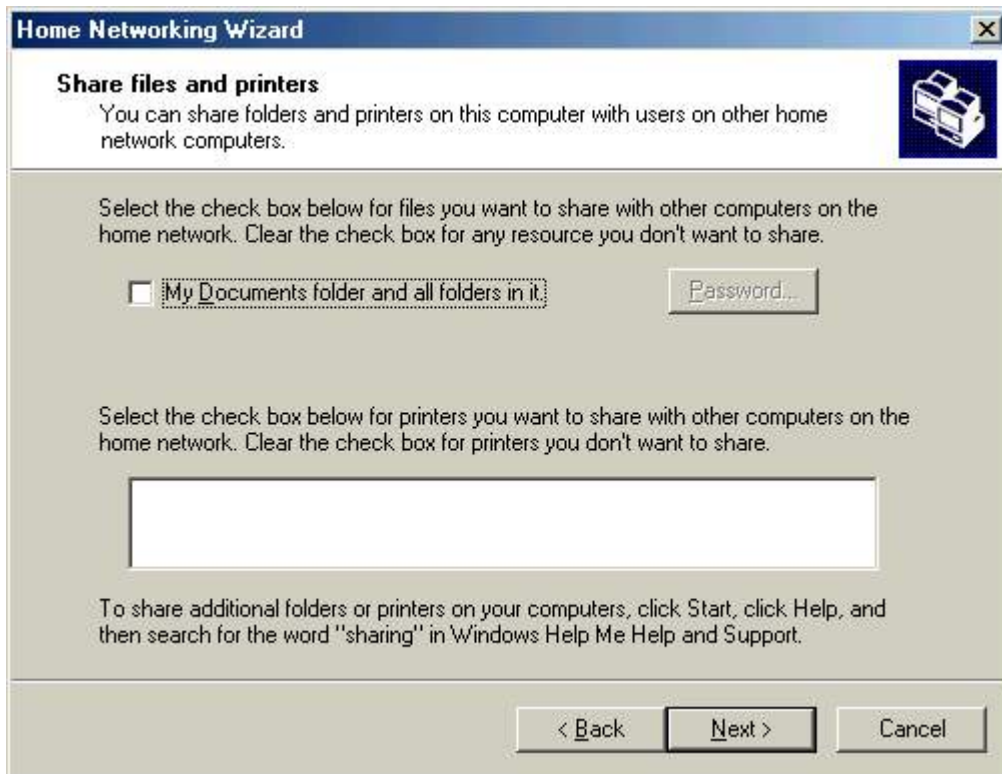
The screenshot shows the 'Home Networking Wizard' dialog box. The title bar reads 'Home Networking Wizard'. The main heading is 'Computer and workgroup names', with a sub-heading 'Each computer on your home network must have a unique name and belong to the same workgroup.' Below this, there are two sections: 'Computer Name' and 'Workgroup Name'. The 'Computer Name' section contains the text 'Type a unique name for this computer, for example, "FamilyRoom" or "Mary".' and a text box labeled 'Computer name:' containing the text 'FAE'. The 'Workgroup Name' section contains the text 'Workgroup names identify a group of computers on your home network. It's similar to how members of a household have the same address.' and two radio button options: 'Use the default workgroup name MSHOME (recommended).' and 'Use this workgroup name:'. The second option is selected, and its text box contains the letter 'H'. At the bottom of the dialog box are three buttons: '< Back', 'Next >', and 'Cancel'.

10. Click “Next”

This screenshot is identical to the one above, showing the 'Home Networking Wizard' dialog box. The 'Computer name' field contains 'FAE' and the 'Workgroup name' field contains 'H'. The 'Next >' button is highlighted, indicating it is the next step in the process.

USER MANUAL for USB2.0 Data-Link/ Bridge-Network

11. Click "Next"



12. Choose "No, do not create a Home networking Setup disk." ,Click "Next"

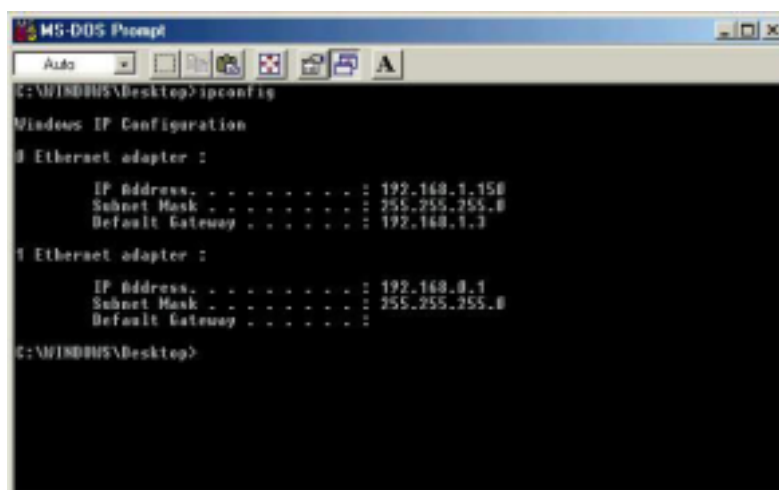


USER MANUAL for USB2.0 Data-Link/ Bridge-Network

13. Click "Finish"



14. Use windows command prompt : "IPCONFIG" to check the connection status.



15. Other PC only connect cable (you don't setup IP Address)

16. Finish

Note : General Internet setting for Peer-to-peer internet connection sharing

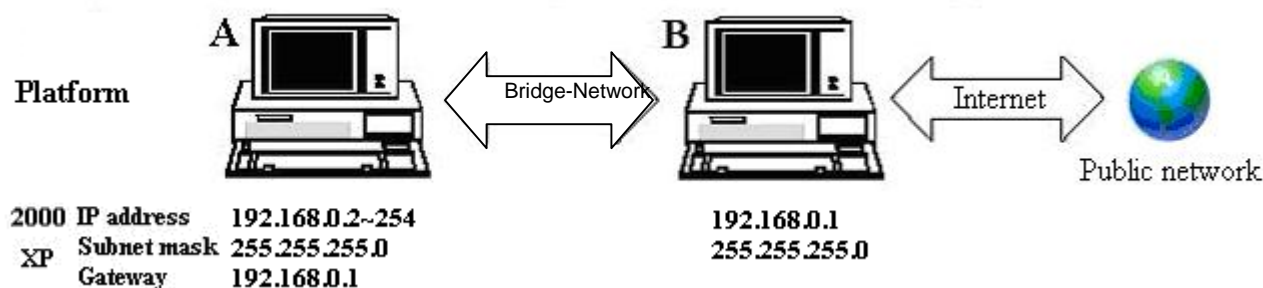
- a) User must be logged on as an administrator or a member of the Administrators group in order to complete this procedure.
- b) Under **Internet Connection Sharing**, in **Home networking connection**, select any adapter that connects the computer sharing its Internet connection to the other computers on user's network.
- c) When user runs the **Network Setup Wizard** and enables **Internet Connection Sharing**, certain protocols, services, interfaces, and routes are configured automatically. The following describes these configured items.

USER MANUAL for USB2.0 Data-Link/ Bridge-Network

Configured item	Action
IP address 192.168.0.1	Configured with a subnet mask of 255.255.255.0 on the LAN adapter that is connected to the home or small office network.
Autodial feature	Enabled.
Static default IP route	Created when the dial-up connection is established.
Internet Connection Sharing service	Started.
DHCP allocator	Enabled with the default range of 192.168.0.1 and a subnet mask of 255.255.255.0. Unique addresses in the range 192.168.0.2 to 192.168.0.254 are allocated to private network clients.
DNS proxy	Enabled.

If users are enabling Internet Connection Sharing on a LAN connection, TCP/IP for the LAN interface that is connected to the Internet must be configured with a default gateway. The TCP/IP addressing for this interface may be a static address or dynamic addressing using DHCP.

For example :



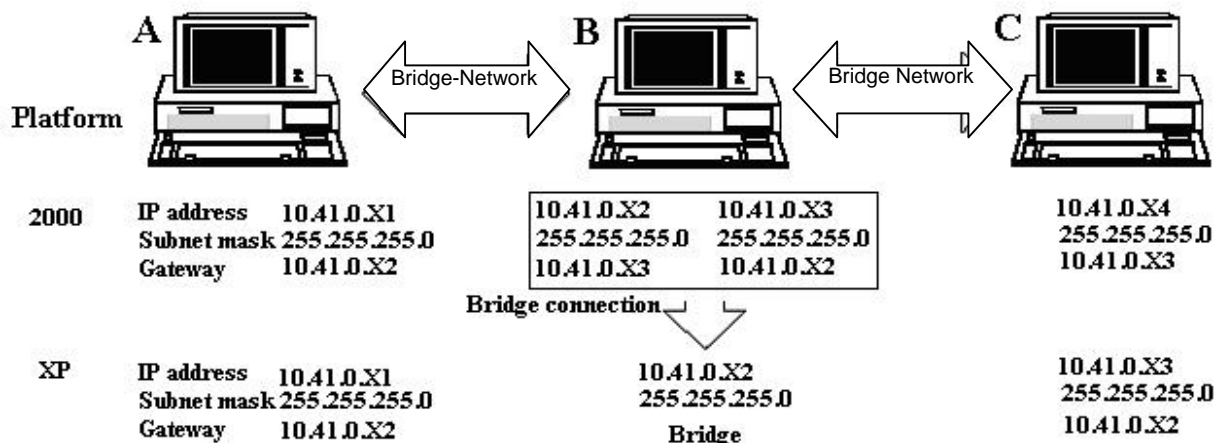
- d) To enable Internet Connection Sharing (ICS) Discovery and Control on Windows 98, Windows 98 SE, and Windows Millennium Edition computers, run the **Network Setup Wizard** from the CD or floppy disk on these computers.
- e) For ICS Discovery and Control to work on Windows 98, Windows 98 Second Edition, and Windows Millennium Edition computers, Internet Explorer version 5.0 or later must be installed.
- f) **Internet Connection Sharing is not available on Windows XP 64-Bit Edition.**

5. Three or more computers share in internet resource with Bridge-Network connection. (Bridge-computers are for Windows XP only, other local computers are for Windows98/ME/2K/XP)

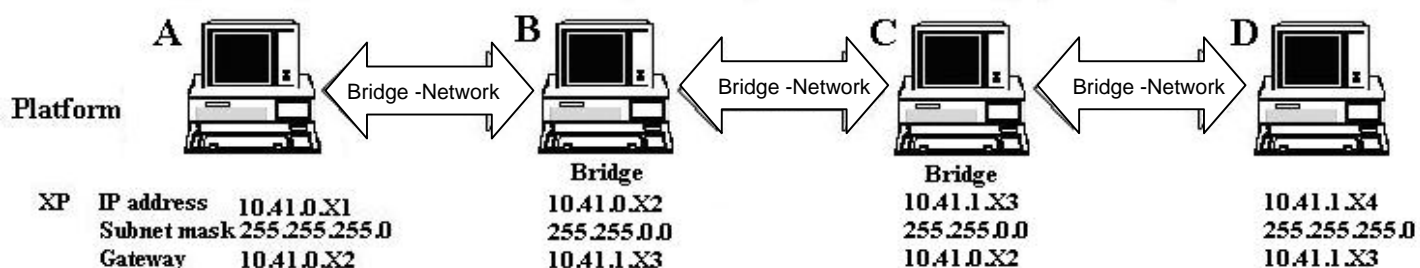
Setup Bridge-computer which is connected 2 or more local connections of Bridge-Network.

For example:

USER MANUAL for USB2.0 Data-Link/ Bridge-Network

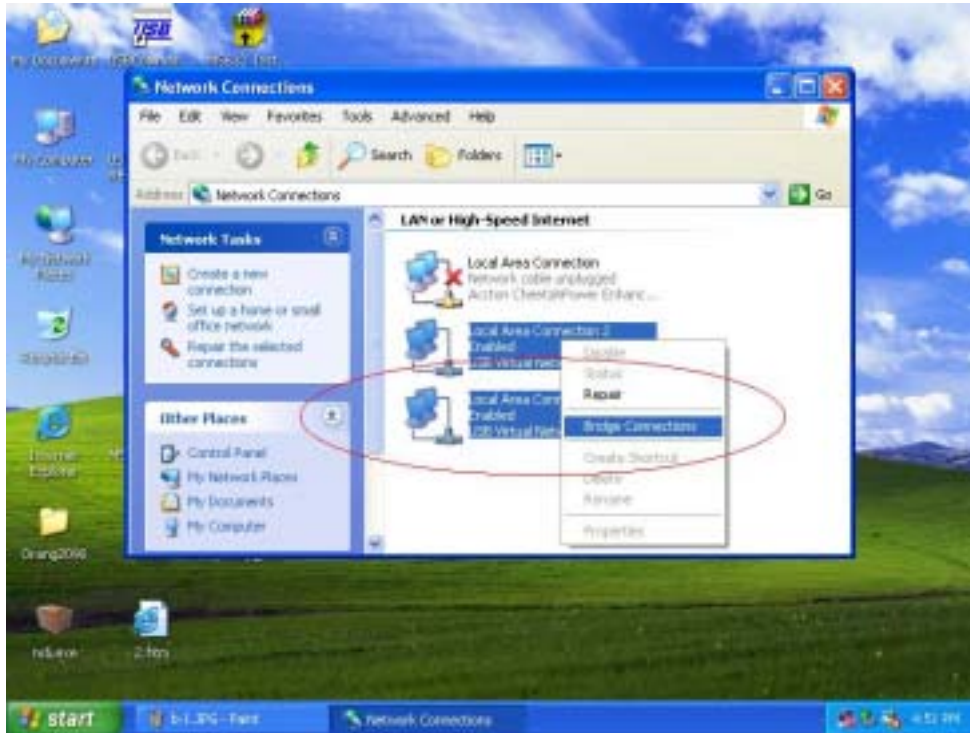


To stride across



- (1) User can find 2 or more Bridge-Network connections in the bridge computers.
- (2) Open Network Connections (Click Start, click Control Panel, click Network and Internet Connections, and then click Network Connections). Under LAN or High-Speed Internet select each of the private network connections that you want to be part of the bridge. Right-click one of the highlighted private network connections, and then click Bridge Connections.

USER MANUAL for USB2.0 Data-Link/ Bridge-Network

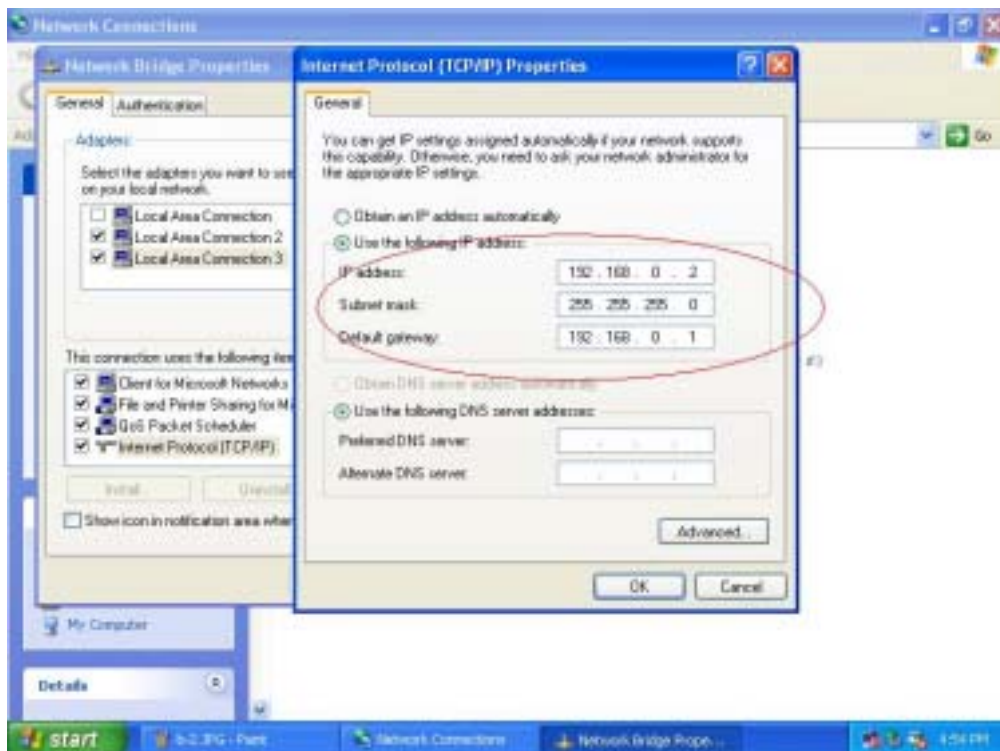


(3) IP address setting is same as Peer-to-peer Internet resource sharing. User have to manual fill into correctly value of bridge connection :

IP address : 192.168.0.x

Subnet mask : 255.255.255.x

Default gateway : 192.168.0.1



USER MANUAL for USB2.0 Data-Link/ Bridge-Network

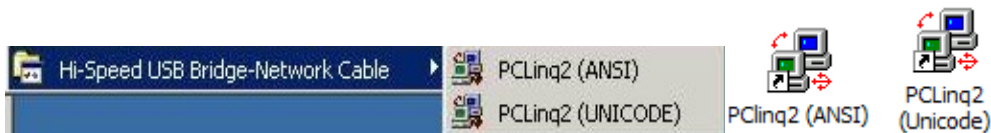
Software Change Device Mode

(The cable don't plug-out, it's the status of the connect)

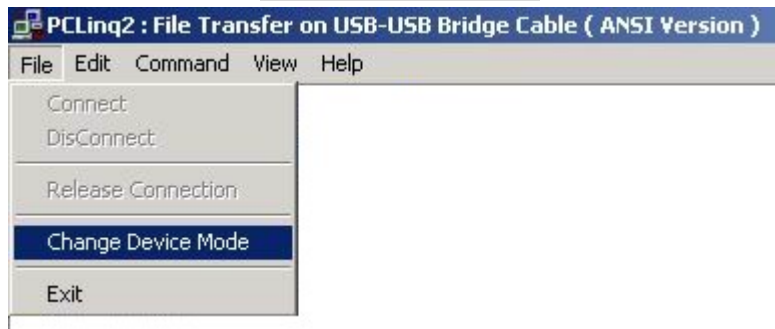
Attention :

When you like to use software change , Hardware change function will be lost.

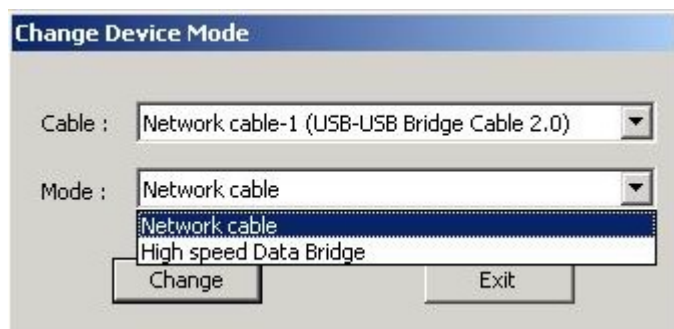
1. Executable program : Click "PCLinq2(ANSI)" or "PCLinq2(Unicode)"



2. Click "file" "Change Device Mode"



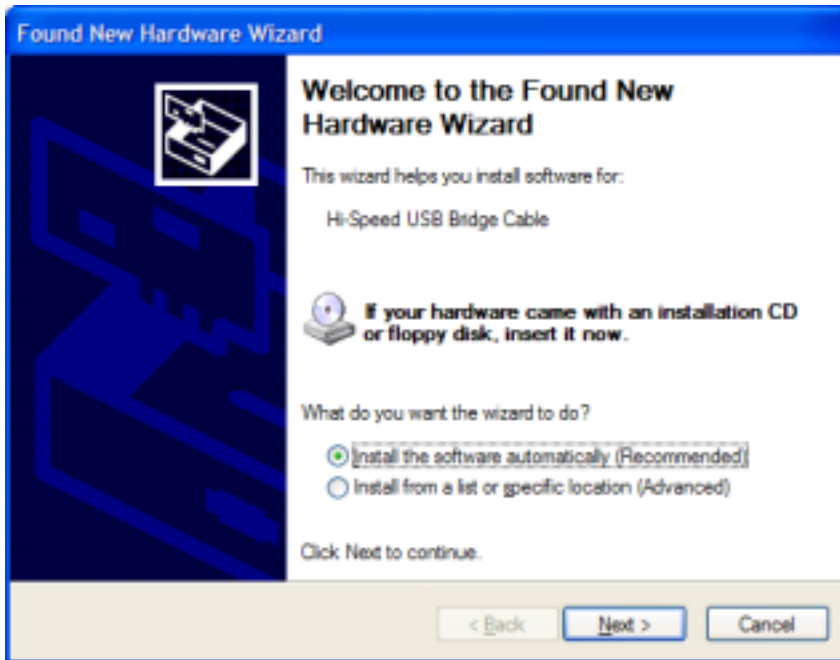
3. You can select Cable and Mode option function .



USER MANUAL for USB2.0 Data-Link/ Bridge-Network

- Network cable become High speed Data Bridge

First change mode show as below



(Please to consult page 07 ~ page 08)

- Network cable become High speed Data Bridge

First change mode show as below



Please click “OK”

4. You confirm method . Right-click on **My Computer**. Then click **Hardware-Device Manager**. Click on **Universal Serial Bus controllers** and check if there is the **Hi-Speed USB Bridge Cable**. Or on **Network adapters** and check if there is the **Hi-Speed USB-USB Network Cable**.

USER MANUAL for USB2.0 Data-Link/ Bridge-Network

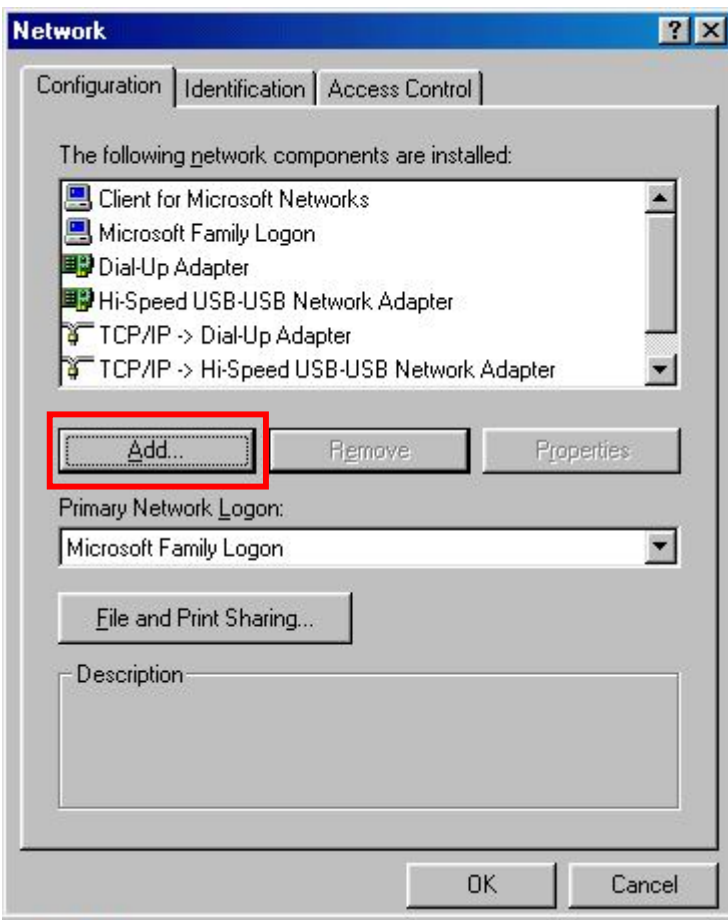
Q&A

- Enable NetBUEI Protocol in windows 98SE

1. When you want use Network Neighborhood to connect others PC, but network occur error message in Windows 98SE.

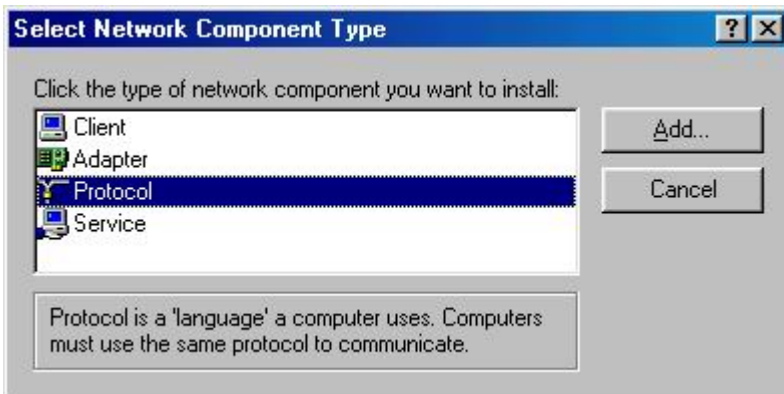


2. Click right moue “Network Neighborhood >Properties>Network , Click “Add” .

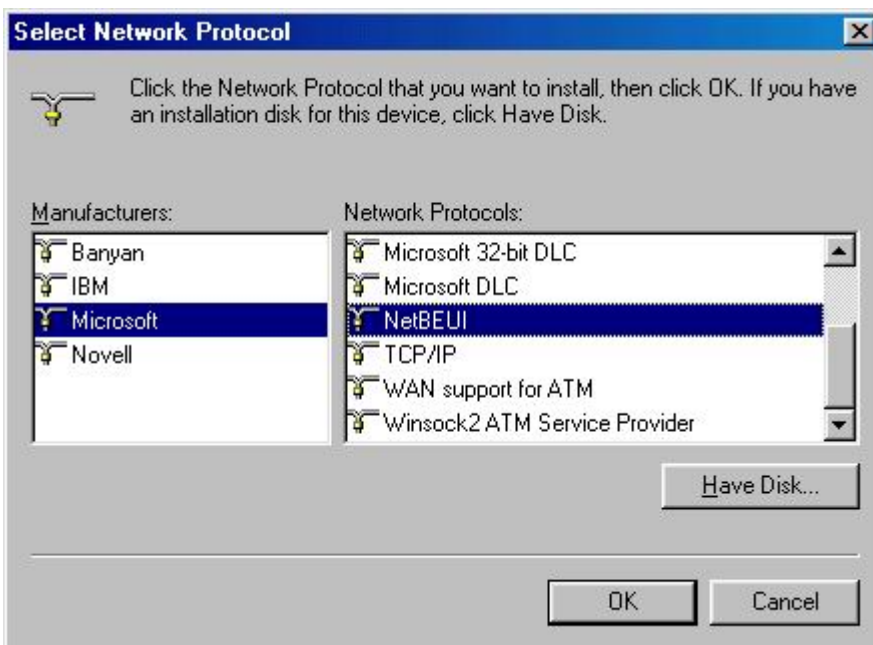


USER MANUAL for USB2.0 Data-Link/ Bridge-Network

3. Select “Protocol” click **Add**.



4. Select “Microsoft>NetBEUI” click **OK**.



5. Finish , other PC step “2~5” again.

USER MANUAL for USB2.0 Data-Link/ Bridge-Network

Appendix:

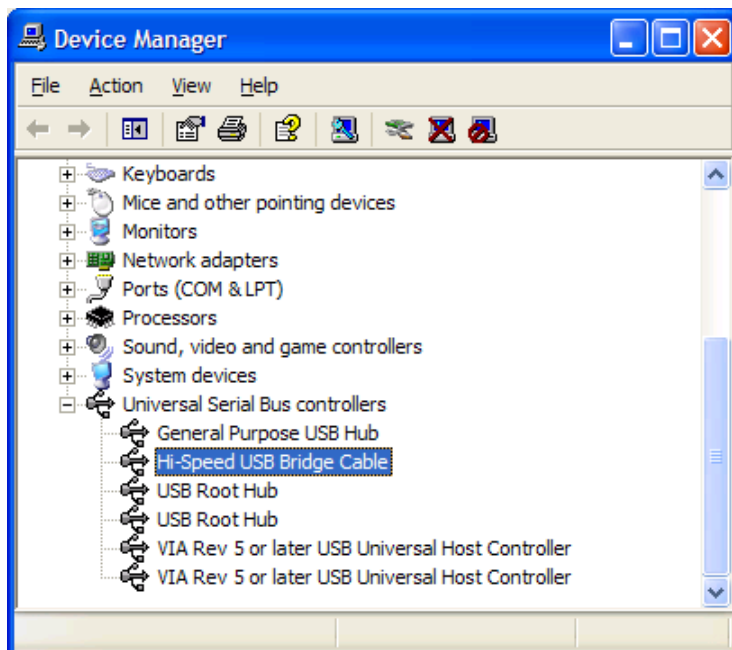
- **Burn-in EEPROM objective :**

When the cable used Software Change Device . You hope you can use Hardware Switch device Mode . You must write your EEPROM Data again.

- **Condition :**

The cable must uses Data-Link driver (Hi-Speed USB Bridge Cable)

You can verify the driver installation under Device Manager. Right-click on **My Computer**. Then click **Hardware-Device Manager**. Click on Universal Serial Bus controllers and check if there is the **Hi-Speed USB Bridge Cable**.



Note :

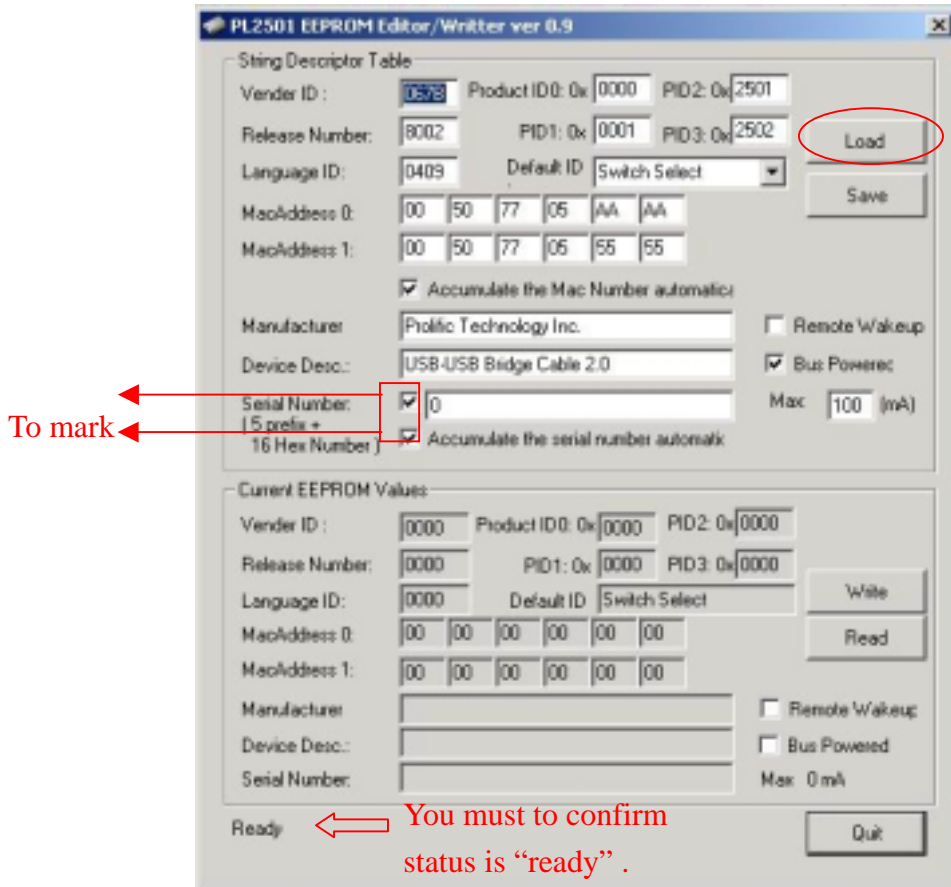
*If the cable shows **Hi-Speed USB-USB Network Adapter** .it isn't **Hi-Speed USB Bridge Cable**. You must Software Change Device Mode became Data-Link driver(**Hi-Speed USB Bridge Cable**)
(Please consult page 41 ~ page 42)*

USER MANUAL for USB2.0 Data-Link/ Bridge-Network

1. Browse and find “EEPROM” Folder in your driver CD open ”eeprom2501.exe” file.

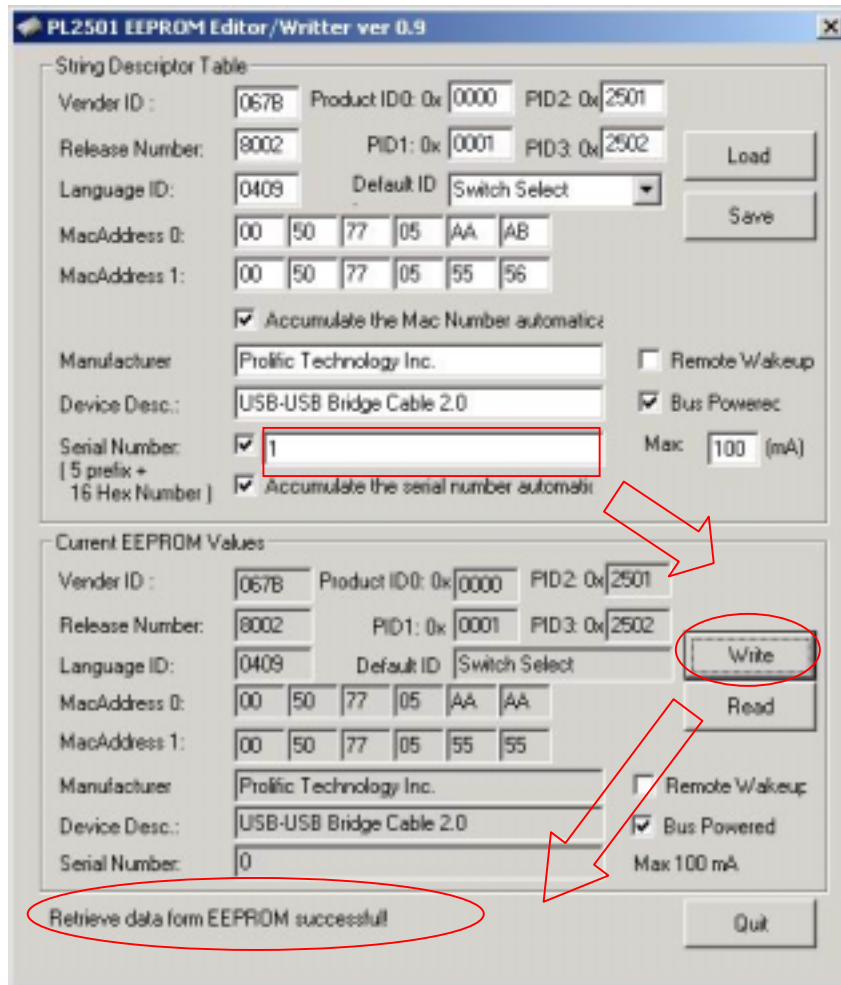


2. Please click “Load “(open ”default.sdt” file.)



USER MANUAL for USB2.0 Data-Link/ Bridge-Network

3. You can Change Serial Number(It's Device ID, It must is one and only number .)
Then click "Write"



4. Please select "Quit" before click "save "(Save Serial Number)
5. Finish